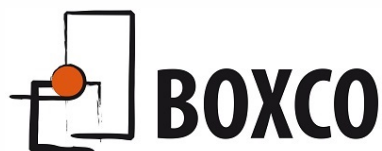


Entry system for cables without connectors



www.boxco.se



DES PM 24

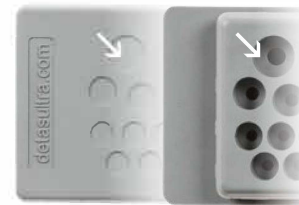


Cable entry plates with double membrane

- ▶ For large number of cables
- ▶ High retaining force thanks to the double membrane
- ▶ Cost efficient solution
- ▶ High IP grade (IP65)



Double parallel membrane



Model	Code	Cable nr. - Ø cable [mm]	Dimensions [mm]		Pcs /pack
			Cut-out	Plate	
DES PM 24/12G	1732052412	12 - max. 15	112 x 36 max. +0.5	144 x 46	10
DES PM 24/14G	1732052414	14 - max. 12,1			
DES PM 24/17G	1732052417	5 - max. 10,5 12 - max. 12,6			
DES PM 24/18G	1732052418	4 - max. 6,5 5 - max. 10,5 5 - max. 12,6 4 - max. 16,1			
DES PM 24/20G	1732052420	13 - max. 6,5 7 - max. 12,1			
DES PM 24/26G	1732052426	16 - max. 6,5 4 - max. 12,1 4 - max. 16,1 2 - cavi ASI			
DES PM 24/42G	1732052442	1 - max. 4,7 12 - max. 5 17 - max. 6,4 12 - max. 7,2			
DES PM 24/48G	1732052448	48 - max. 6,5			
DES PM 24/50G	1732052450	33 - max. 5,3 9 - max. 6,4 8 - max. 8,3			

The DES PM 24 is an alternative to standard cable glands on electrical, electronic and telecommunication cabinets and equipment.

The cable is pushed through the front membrane, whilst the second membrane increases the strain relief and liquid resistance.

Technical data

Material: TPE

Flammability: self-extinguishing acc. to UL94-V0

Temperature: -40°C... +105°C (static)

Features: halogens and silicones free

Wall thickness: from 1,5 to 2,5 mm

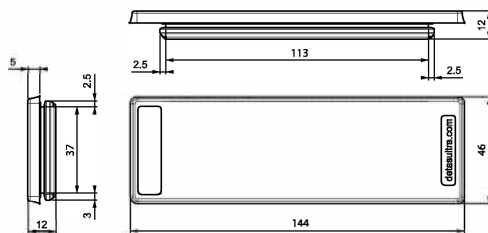
Related products

Hydraulic punch driver HY360

Plugs IFP

2

Dimensions [mm]





Cable entry plates with double membrane

- ▶ For large number of cables
- ▶ High retaining force thanks to the double membrane
- ▶ Cost efficient solution
- ▶ High IP grade (IP65)



Double parallel membrane



Model	Code	Cable nr. - Ø cable [mm]	Dimensions [mm]		Pcs /pack
			Cut-out	Plate	
DES PM 24/12B	1732053413	12 - max. 15	112 x 36 max. +0,5	144 x 46	10
DES PM 24/14B	1732053415	14 - max. 12,1			
DES PM 24/17B	1732053418	5 - max. 10,5 12 - max. 12,6			
DES PM 24/18B	1732053419	4 - max. 6,5 5 - max. 10,5 5 - max. 12,6 4 - max. 16,1			
DES PM 24/20B	1732053421	13 - max. 6,5 7 - max. 12,1			
DES PM 24/26B	1732053427	16 - max. 6,5 4 - max. 12,1 4 - max. 16,1 2 - cavi ASI			
DES PM 24/42B	1732053443	1 - max. 4,7 12 - max. 5 17 - max. 6,4 12 - max. 7,2			
DES PM 24/48B	1732053449	48 - max. 6,5			
DES PM 24/50B	1732053451	33 - max. 5,3 9 - max. 6,4 8 - max. 8,3			

The DES PM 24 is an alternative to standard cable glands on electrical, electronic and telecommunication cabinets and equipment.

The cable is pushed through the front membrane, whilst the second membrane increases the strain relief and liquid resistance.

Technical data

Material: TPE

Flammability: self-extinguishing acc. to UL94-V0

Temperature: -40°C... +105°C (static)

Features: halogens and silicones free

Wall thickness: from 1,5 to 2,5 mm

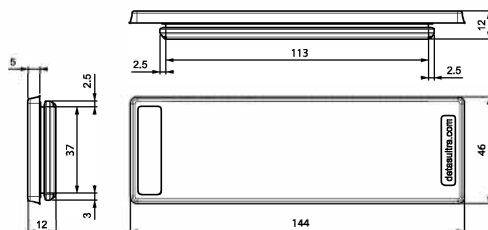
Related products

Hydraulic punch driver HY360

Plugs IFP



Dimensions [mm]





DES PM S



Cable entry plates with double membrane

- ▶ For large number of cables
- ▶ High retaining force thanks to the double membrane
- ▶ Cost efficient solution
- ▶ High IP grade (IP65)



Double parallel membrane



Model	Code	Cable nr. - Ø cable [mm]	Dimensions [mm]		Pcs /pack
			Cut-out A1xA2	Plate L1xL2	
DES PM S 46/7G	1732074607	2 - max. 6,5 5 - max. 8,3	46 x 18 max. +0,5	64 x 28	10
DES PM S 46/9G	1732074609	8 - max. 6,5 1 - max. 12,1			
DES PM S 69/8G	1732076908	8 - max. 6,5	69 x 10 max. +0,5	86 x 20	
DES PM S 86/11G	1732078611	2 - max. 6,5 9 - max. 8,35	85 x 18 max. +0,5	103 x 28	
DES PM S 86/17G	1732078617	16 - max. 6,5 1 - max. 12,1			
DES PM S 112/21G	1732071221	16 - max. 6,5 4 - max. 8,3 1 - max. 12,1	112 x 18 max. +0,5	130 x 28	

The DES PM S is an alternative to standard cable glands on electrical, electronic and telecommunication cabinets and equipment.

The cable is pushed through the front membrane, whilst the second membrane increases the strain relief and liquid resistance.

Technical data

Material: TPE

Flammability: self-extinguishing acc. to UL94-V0

Temperature: -40°C... +105°C (static)

Features: halogens and silicones free

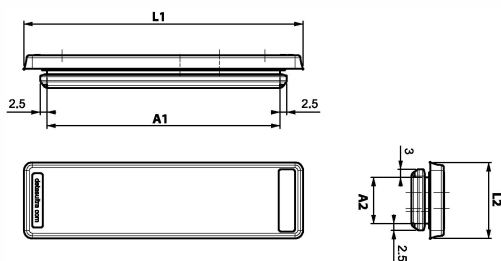
Wall thickness: from 1,5 to 2,5 mm

Related products

Plugs IFP

2

Dimensions [mm]



IP65

NEMA 4X

NEMA 12





Cable entry plates with double membrane

- ▶ For large number of cables
- ▶ High retaining force thanks to the double membrane
- ▶ Cost efficient solution
- ▶ High IP grade (IP65)



Double parallel membrane



Model	Code	Cable nr. - Ø cable [mm]	Dimensions [mm]		Pcs /pack
			Cut-out A1xA2	Plate L1xL2	
DES PM S 46/7G	1732074608	2 - max. 6,5 5 - max. 8,3	46 x 18 max. +0,5	64 x 28	10
DES PM S 46/9G	1732074610	8 - max. 6,5 1 - max. 12,1			
DES PM S 69/8G	1732076909	8 - max. 6,5	69 x 10 max. +0,5	86 x 20	
DES PM S 86/11G	1732078612	2 - max. 6,5 9 - max. 8,35	85 x 18 max. +0,5	103 x 28	
DES PM S 86/17G	1732078618	16 - max. 6,5 1 - max. 12,1			
DES PM S 112/21G	1732071222	16 - max. 6,5 4 - max. 8,3 1 - max. 12,1	112 x 18 max. +0,5	130 x 28	

The DES PM S is an alternative to standard cable glands on electrical, electronic and telecommunication cabinets and equipment.

The cable is pushed through the front membrane, whilst the second membrane increases the strain relief and liquid resistance.

Technical data

Material: TPE

Flammability: self-extinguishing acc. to UL94-V0

Temperature: -40°C... +105°C (static)

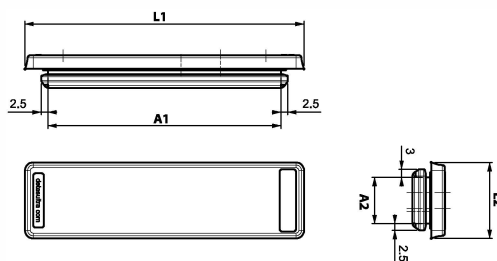
Features: halogens and silicones free

Wall thickness: from 1,5 to 2,5 mm

Related products

Plugs IFP

Dimensions [mm]





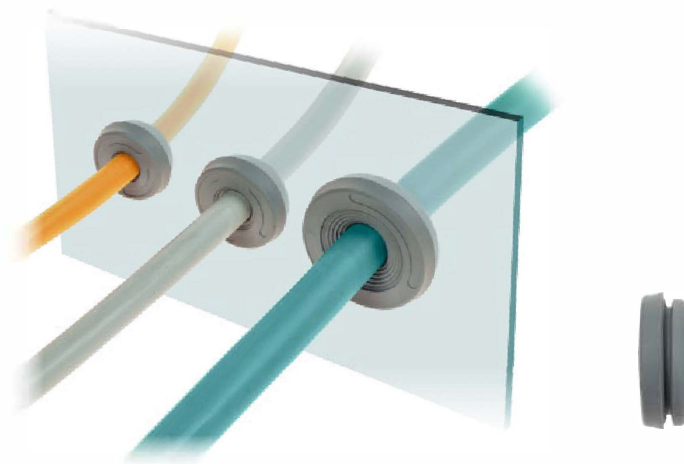
DES PMU



Round cable entry plates with double membrane for single cable

- ▶ Metric sizes
- ▶ Quick to install
- ▶ Cost efficient solution
- ▶ High IP grade (IP66-67)
- ▶ Reduced thickness

Double parallel membrane



Model	Code	Cable nr. - Ø cable [mm]	Dimensions [mm]		Pcs /pack
			Ø Cut-out	Ø Plate	
DES PMU 16G	1732060116	1 - max. 10	16,5	24	10
DES PMU 20G	1732060120	1 - max. 13	20,5	29	
DES PMU 25G	1732060125	1 - max. 15	25,4	34	
DES PMU 32G	1732260132	1 - max. 22	32,5	40	
DES PMU 16B	1732061116	1 - max. 10	16,5	24	
DES PMU 20B	1732061120	1 - max. 13	20,5	29	
DES PMU 25B	1732061125	1 - max. 15	25,4	34	
DES PMU 32B	1732261132	1 - max. 22	32,5	40	

The round metric DES PMU is a single cable alternative to standard cable glands on electrical, electronic and telecommunication cabinets and equipment.

The cable is pushed through the front membrane, whilst the second membrane increases the strain relief and liquid resistance.

Technical data

Material: TPE

Flammability: self-extinguishing acc. to UL94-V0

Temperature: -40°C... +105°C (static)

Features: halogens and silicones free

Wall thickness: from 1,5 to 2,5 mm

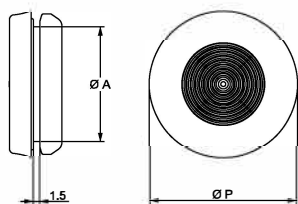
Related products

Hydraulic punch driver HY360

Plugs IFP

2

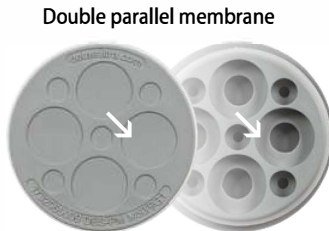
Dimensions [mm]





Round cable entry plates with double membrane

- ▶ For large number of cables
- ▶ High retaining force thanks to the double membrane
- ▶ Cost efficient solution
- ▶ High IP grade (IP65)
- ▶ Metric sizes



Type 1 Type 2



Model	Code	Cable nr. - Ø cable [mm]	Dimensions [mm]		Pcs /pack
			Ø Cut-out	Ø Plate	
DES PM M 25/4G	type 1: 1732062504	4 - max. 8	min.: 25 max.: 26 recomm.: 25,5	34	10
	type 1: 1732062506	4 - max. 5,2 2 - max. 9,4			
DES PM M 32/10G	type 1: 1732063210	6 - max. 5,2 2 - max. 6,4	min.: 32 max.: 33 recomm.: 32,5	40	
	type 2: 1732263210	2 - max. 9,4			
DES PM M 50/9G	type 1: 1732065009	5 - max. 7 4 - max. 18,3	min.: 50 max.: 51 recomm.: 50,5	62	
DES PM M 50/11G	type 1: 1732065011	7 - max. 7 3 - max. 11,4 1 - max. 22			
DES PM M 50/12G	type 1: 1732065012	10 - max. 9			
	type 2: 1732265012	2 - max. 11,4			
DES PM M 50/15G	type 1: 1732065015	2 - max. 6 4 - max. 7,2 4 - max. 9,7 5 - max. 12			
DES PM M 50/17G	type 1: 1732065017	5 - max. 5,5			
		5 - max. 6,5 3 - max. 9,7 4 - max. 11,4			
DES PM M 50/20G	type 1: 1732065020	16 - max. 6,5 4 - max. 9,7			

The round metric DES PM M is an alternative to standard cable glands on electrical, electronic and telecommunication cabinets and equipment.

The cable is pushed through the front membrane, whilst the second membrane increases the strain relief and liquid resistance.

Technical data

Material: TPE

Flammability: self-extinguishing acc. to UL94-V0

Temperature: -40°C... +105°C (static)

Features: halogens and silicones free

Type 1: wall thickness from 1,5 to 2,5 mm

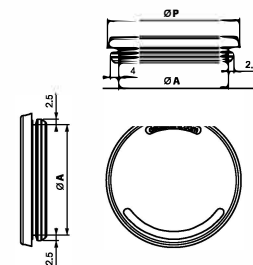
Type 2: wall thickness from 2,8 to 4 mm

Related products

Hydraulic punch driver HY360

Plugs IFP

Dimensions [mm]





DES PM M



Round cable entry plates with double membrane

- ▶ For large number of cables
- ▶ High retaining force thanks to the double membrane
- ▶ Cost efficient solution
- ▶ High IP grade (IP65)
- ▶ Metric sizes



Model	Code	Cable nr. - Ø cable [mm]	Dimensions [mm]		Pcs /pack
			Ø Cut-out	Ø Plate	
DES PM M 25/4B	type 1: 1732063505	4 - max. 8	min.: 25 max.: 26 recomm.: 25,5	34	10
DES PM M 25/6B	type 1: 1732063507	4 - max. 5,2 2 - max. 9,4			
DES PM M 32/10B	type 1: 1732064211 type 2: 1732264211	6 - max. 5,2 2 - max. 6,4 2 - max. 9,4	min.: 32 max.: 33 recomm.: 32,5	40	10
DES PM M 50/9B	type 1: 1732066010	5 - max. 7 4 - max. 18,3			
DES PM M 50/11B	type 1: 1732066012	7 - max. 7 3 - max. 11,4 1 - max. 22			
DES PM M 50/12B	type 1: 1732066013 type 2: 1732266013	10 - max. 9 2 - max. 11,4			
DES PM M 50/15B	type 1: 1732066016	2 - max. 6 4 - max. 7,2 4 - max. 9,7 5 - max. 12	min.: 50 max.: 51 recomm.: 50,5	62	10
DES PM M 50/17B	type 1: 1732066018	5 - max. 5,5 5 - max. 6,5 3 - max. 9,7 4 - max. 11,4			
DES PM M 50/20B	type 1: 1732066021	16 - max. 6,5 4 - max. 9,7			

The round metric DES PM M is an alternative to standard cable glands on electrical, electronic and telecommunication cabinets and equipment.

The cable is pushed through the front membrane, whilst the second membrane increases the strain relief and liquid resistance.

Technical data

Material: TPE

Flammability: self-extinguishing acc. to UL94-V0

Temperature: -40°C... +105°C (static)

Features: halogens and silicones free

Type 1: wall thickness from 1,5 to 2,5 mm

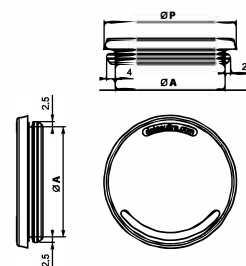
Type 2: wall thickness from 2,8 to 4 mm

Related products

Hydraulic punch driver HY360

Plugs IFP

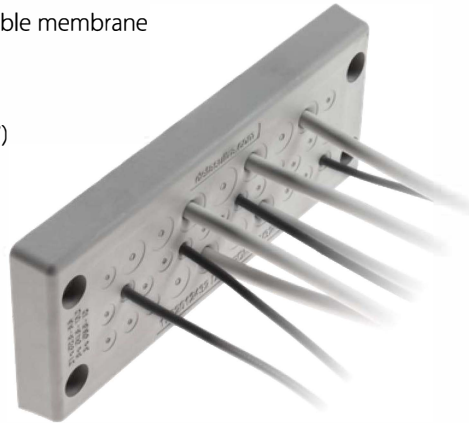
Dimensions [mm]



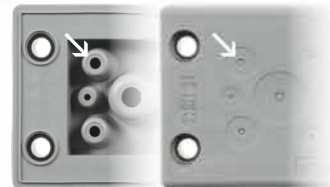


Cable entry plates with internal frame and double membrane

- ▶ For large number of cables without connectors
- ▶ High strain relief thanks to the double membrane
- ▶ Cost efficient solution
- ▶ IP66 and Nema 4X certified
- ▶ ATEX version on request (see sec. 7)
- ▶ Threaded inserts or plastic rivets version on request



Double parallel membrane



Model	Code	Cable nr. - Ø cable min/max [mm]	Dimensions [mm]		Pcs /pack
			Cut-out	Plate	
DES PDM 24/14G	1732012414	10 - 2,8 / 6,5 4 - 14,5 / 22	112 x 36	148,6 x 59,6	10
DES PDM 24/15G	1732012415	15 - 6,8 / 12			
DES PDM 24/16G	1732012416	8 - 2,8 / 6,5 4 - 4,4 / 9,7 2 - 8,6 / 16,2 2 - 14,5 / 22			
DES PDM 24/17G	1732012417	6 - 2,8 / 6,5 6 - 4,6 / 10,2 5 - 8,6 / 16,2			
DES PDM 24/25G	1732012425	12 - 2,8 / 6,5 7 - 4,4 / 9,7 6 - 6,8 / 12			
DES PDM 24/32G	1732012432	21 - 2,8 / 6,5 8 - 4,6 / 10,2 3 - 6,8 / 12			
DES PDM 24/42G	1732012442	42 - 2,8 / 6,5			

The DES PDM 24 is an innovative alternative to standard cable glands on electrical, electronic and telecommunication cabinets and equipment.

The cable is pushed through the front membrane, whilst the second membrane increases the strain relief and liquid resistance.

Technical data

Material: TPE

Flammability: self-extinguishing acc. to UL94-V0

Temperature: -40°C... +105°C (static)

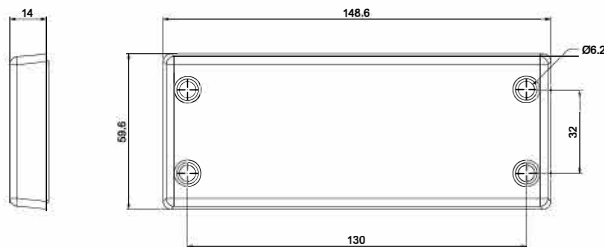
Features: halogens and silicones free

Related products

Hydraulic punch driver HY360

Plugs IFP

Dimensions [mm]



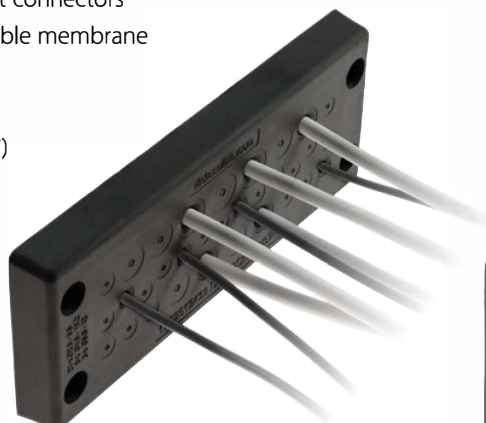


DES PDM 24



Cable entry plates with internal frame and double membrane

- ▶ For large number of cables without connectors
- ▶ High strain relief thanks to the double membrane
- ▶ Cost efficient solution
- ▶ IP66 and Nema 4X certified
- ▶ ATEX version on request (see sec. 7)
- ▶ Threaded inserts or plastic rivets version on request



Double parallel membrane



Model	Code	Cable nr. - Ø cable min/max [mm]	Dimensions [mm]		Pcs /pack
			Cut-out	Plate	
DES PDM 24/14B	1732013415	10 - 2,8 / 6,5 4 - 14,5 / 22	112 x 36	148,6 x 59,6	10
DES PDM 24/15B	1732013416	15 - 6,8 / 12			
DES PDM 24/16B	1732013417	8 - 2,8 / 6,5 4 - 4,4 / 9,7 2 - 8,6 / 16,2 2 - 14,5 / 22			
DES PDM 24/17B	1732013418	6 - 2,8 / 6,5 6 - 4,6 / 10,2 5 - 8,6 / 16,2			
DES PDM 24/25B	1732013426	12 - 2,8 / 6,5 7 - 4,4 / 9,7 6 - 6,8 / 12			
DES PDM 24/32B	1732013433	21 - 2,8 / 6,5 8 - 4,6 / 10,2 3 - 6,8 / 12			
DES PDM 24/42B	1732013443	42 - 2,8 / 6,5			

I passacavi DES PDM 24 sono un'alternativa economica ed affidabile ai normali pressacavi industriali.

Dopo aver forato leggermente la membrana frontale, il cavo delle dimensioni richieste viene spinto attraverso la parete dove la seconda membrana permette una maggior tenuta meccanica e fluidica.

Technical data

Material: TPE

Flammability: self-extinguishing acc. to UL94-V0

Temperature: -40°C... +105°C (static)

Features: halogens and silicones free

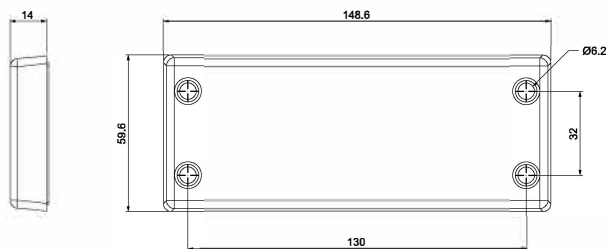
Related products

Hydraulic punch driver HY360

Plugs IFP

2

Dimensions [mm]



IP66

NEMA 4X

NEMA 12



ECOLAB



UV

ISO 4892-2A

RoHS COMPLIANT



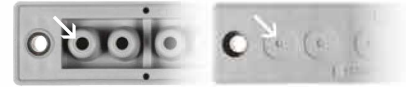


Cable entry plates with internal frame and double membrane

- ▶ For several number of cables in a limited space
- ▶ High strain relief thanks to the double membrane
- ▶ Cost efficient solution
- ▶ High IP grade (IP65)
- ▶ ATEX version on request (see sec. 7)
- ▶ Threaded inserts or plastic rivets version on request



Double parallel membrane



Model	Code	Cable nr. - Ø cable min/max [mm]	Dimensions [mm]		Pcs /pack
			Cut-out	Plate	
DES PDM S 112/7G	1732021127	7 - 6,8 / 12	112x18	150x32	10
DES PDM S 112/22G	1732021122	22 - 3,2 / 6,5			
DES PDM S 112/7B	1732022127	7 - 6,8 / 12			
DES PDM S 112/22B	1732022122	22 - 3,2 / 6,5			

The DES PDM S is an innovative alternative to standard cable glands on electrical, electronic and telecommunication cabinets and equipment.

The cable is pushed through the front membrane, whilst the second membrane increases the strain relief and liquid resistance.

Technical data

Material: TPE

Flammability: self-extinguishing acc. to UL94-V0

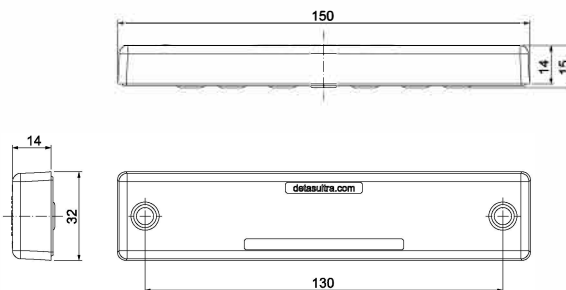
Temperature: -40°C... +105°C (static)

Features: halogens and silicones free

Related products

Plugs IFP

Dimensions [mm]



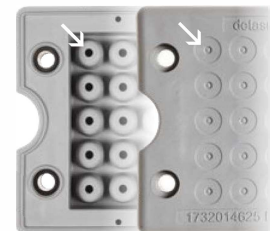


Cable entry plates with internal frame and double membrane

- ▶ For large number of cables without connectors
- ▶ High strain relief thanks to the double membrane
- ▶ Cost efficient solution
- ▶ IP66 and Nema 4X certified
- ▶ ATEX version on request (see sec. 7)
- ▶ Threaded inserts or plastic rivets version on request



Double parallel membrane



Model	Code	Cable nr. - Ø cable min/max [mm]	Dimensions [mm]		Pcs /pack
			Cut-out	Plate	
DES PDM Q 13G	1732014613	8 - 2,8 / 6,5 4 - 4,6 / 10,2 1 - 14,5 / 22	46 x 46	74x60	10
DES PDM Q 17G	1732014617	10 - 2,8 / 6,5 4 - 4,6 / 10,2 2 - 6,8 / 12 1 - 8,6 / 16,2			
DES PDM Q 25G	1732014625	25 - 2,8 / 6,5			
DES PDM Q 13B	1732015614	8 - 2,8 / 6,5 4 - 4,6 / 10,2 1 - 14,5 / 22			
DES PDM Q 17B	1732015618	10 - 2,8 / 6,5 4 - 4,6 / 10,2 2 - 6,8 / 12 1 - 8,6 / 16,2			
DES PDM Q 25B	1732015626	25 - 2,8 / 6,5			

The DES PDM Q is an innovative alternative to standard cable glands on electrical, electronic and telecommunication cabinets and equipment.

The cable is pushed through the front membrane, whilst the second membrane increases the strain relief and liquid resistance.

Technical data

Material: TPE

Flammability: self-extinguishing acc. to UL94-V0

Temperature: -40°C... +105°C (static)

Features: halogens and silicones free

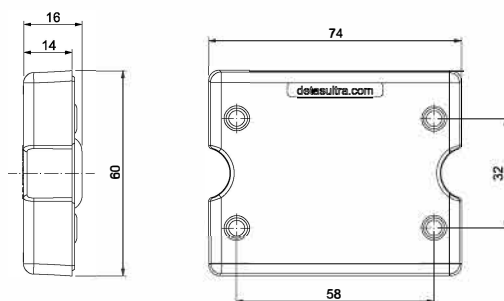
Related products

Hydraulic punch driver HY360

Plugs IFP

2

Dimensions [mm]



IP66



ECOLAB



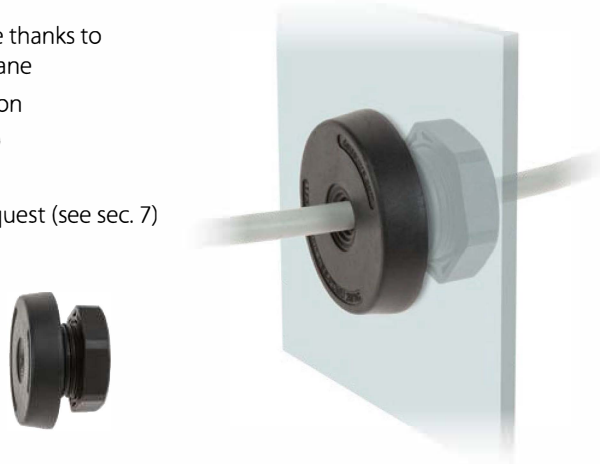
ISO 4892-2A





Round cable entry plates for single cable - internal frame and double membrane

- ▶ Metric sized
- ▶ High retaining force thanks to the double membrane
- ▶ Cost efficient solution
- ▶ High IP grade (IP66)
- ▶ Reduced thickness
- ▶ ATEX version on request (see sec. 7)



Double parallel membrane



Model	Code	Cable nr. - Ø cable [mm]	Dimensions [mm]			Pcs /pack
			Thread	Ø Cut-out	Ø Plate	
DES PDMU 20G	1732030120	1 - max. 10,5	M20	20,5	36	10
DES PDMU 25G	1732030125	1 - max. 16	M25	25,5	40	
DES PDMU 32G	1732030132	1 - max. 22	M32	32,5	46	
DES PDMU 20B	1732031120	1 - max. 10,5	M20	20,5	36	
DES PDMU 25B	1732031125	1 - max. 16	M25	25,5	40	
DES PDMU 32B	1732031132	1 - max. 22	M32	32,5	46	

The cable entry plates series DES PDMU are used to save space and time as alternative to cable glands. They use the metric holes on cabinets or machinery and the nutlock guarantees a strong strain relief and highest water and dust protection.

The cable is pushed through the front membrane, whilst the second membrane increases the strain relief and liquid resistance.

Technical data

Material: TPE

Flammability: self-extinguishing acc. to UL94-V0

Temperature: -40°C... +105°C (static)

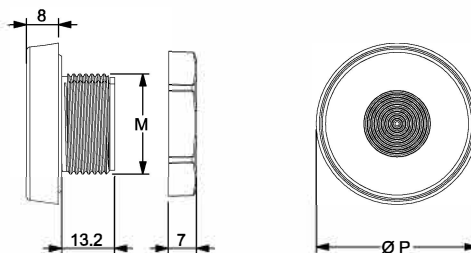
Features: halogens and silicones free

Related products

Hydraulic punch driver HY360

Plugs IFP

Dimensions [mm]



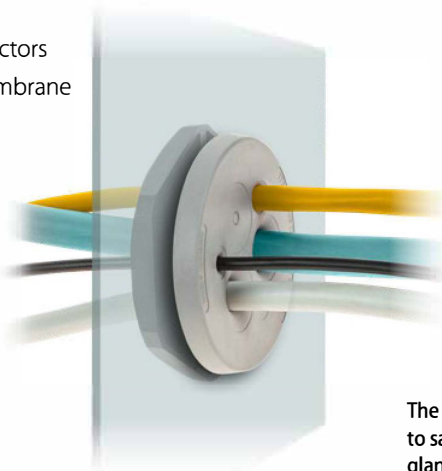


DES PDM M



Round cable entry plates with internal frame and double membrane

- ▶ Metric sized
- ▶ For large number of cables without connectors
- ▶ High strain relief thanks to the double membrane
- ▶ Cost efficient solution
- ▶ High IP grade (IP66-68)
- ▶ ATEX version on request (see sec. 7)
- ▶ Locknut included



Double parallel membrane



The cable entry plates series DES PDMU are used to save space and time as alternative to cable glands. They use the metric holes on cabinets or machinery and the nutlock guarantees a strong strain relief and highest water and dust protection.

The cable is pushed through the front membrane, whilst the second membrane increases the strain relief and liquid resistance.

Technical data

Material: TPE

Flammability: self-extinguishing acc. to UL94-V0

Temperature: -40°C... +105°C (static)

Features: halogens and silicones free

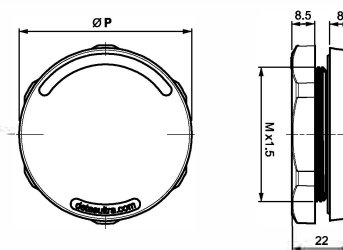
Related products

Hydraulic punch driver HY360

Plugs IFP



Dimensions [mm]



Model	Code	Cable nr. - Ø cable min/max [mm]	Thread x1.5	Dimensions Ø P [mm]	Pcs /pack
DES PDM M32/4G	1732033204	3 - 2,6 / 6,5 1 - 5,5 / 12,5			
DES PDM M32/4-2G	1732033242	4 - 3,5 / 8,8	M32	46	
DES PDM M32/7G	1732033207	7 - 2,6 / 6,5			
DES PDM M40/8G	1732034008	4 - 2,6 / 6,5 4 - 4 / 10,2	M40	54	
DES PDM M50/8G	1732035008	5 - 4,6 / 10,2 3 - 6,8 / 12,5			
DES PDM M50/10G	1732035010	7 - 2,8 / 6,5 2 - 4,6 / 10,2 1 - 14,5 / 22	M50	64	
DES PDM M50/12G	1732035012	4 - 2,8 / 6,5 8 - 4,6 / 10,2			10
DES PDM M50/19G	1732035019	19 - 2,8 / 6,5			
DES PDM M63/6G	1732036306	3 - 4,6 / 10,2 3 - 10,9 / 20			
DES PDM M63/9G	1732036309	1 - 2,6 / 6 3 - 4,6 / 10,2 4 - 8,6 / 16,2 1 - 10,9 / 20	M63	77	
DES PDM M63/13G	1732036313	4 - 2,8 / 6 4 - 4,6 / 10,2 5 - 9,5 / 16,2			
DES PDM M63/14G	1732036314	14 - 5 / 10			
DES PDM M63/35G	1732036335	35 - 2,6 / 5,5			

2



IP66
IP68

NEMA
4X

NEMA
12



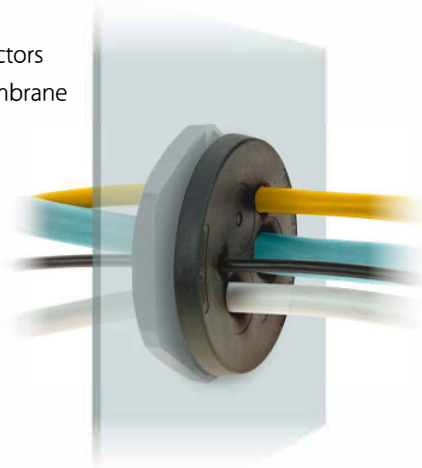
ECOLAB



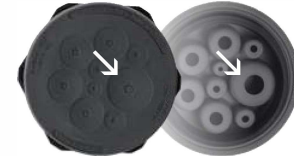


Round cable entry plates with internal frame and double membrane

- ▶ Metric sized
- ▶ For large number of cables without connectors
- ▶ High strain relief thanks to the double membrane
- ▶ Cost efficient solution
- ▶ High IP grade (IP66-68)
- ▶ ATEX version on request (see sec. 7)
- ▶ Locknut included



Double parallel membrane



Model	Code	Cable nr.	Thread	Dimensions	Pcs
		- Ø cable min/max [mm]	x1.5	Ø P [mm]	/pack
DES PDM M32/4B	1732034205	3- 2,6 / 6,5 1- 5,5 / 12,5			10
DES PDM M32/4-2B	1732034252	4- 3,5 / 8,8	M32	46	
DES PDM M32/7B	1732034208	7- 2,6 / 6,5			
DES PDM M40/8B	1732035009	4- 2,6 / 6,5 4- 4 / 10,2	M40	54	
DES PDM M50/8B	1732036009	5- 4,6 / 10,2 3- 6,8 / 12,5	M50	64	
DES PDM M50/10B	1732036011	7- 2,8 / 6,5 2- 4,6 / 10,2 1- 14,5 / 22			
DES PDM M50/12B	1732036013	4- 2,8 / 6,5 8- 4,6 / 10,2			
DES PDM M50/19B	1732036020	19- 2,8 / 6,5			
DES PDM M63/6B	1732037307	3- 4,6 / 10,2 3- 10,9 / 20	M63	77	
DES PDM M63/9B	1732037310	1- 2,6 / 6 3- 4,6 / 10,2 4- 8,6 / 16,2 1- 10,9 / 20			
DES PDM M63/13B	1732037314	4- 2,8 / 6 4- 4,6 / 10,2 5- 9,5 / 16,2			
DES PDM M63/14B	1732037315	14- 5 / 10			
DES PDM M63/35B	1732037336	35- 2,6 / 5,5			

The cable entry plates series DES PDMU are used to save space and time as alternative to cable glands. They use the metric holes on cabinets or machinery and the nutlock guarantees a strong strain relief and highest water and dust protection.

The cable is pushed through the front membrane, whilst the second membrane increases the strain relief and liquid resistance.

Technical data

Material: TPE

Flammability: self-extinguishing acc. to UL94-V0

Temperature: -40°C... +105°C (static)

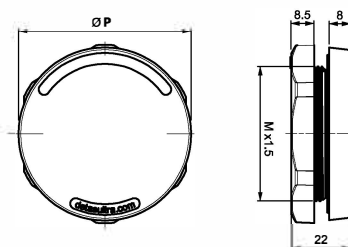
Features: halogens and silicones free

Related products

Hydraulic punch driver HY360

Plugs IFP

Dimensions [mm]





DES PDM KN



Cable entry plate - large frame and double membrane

- ▶ For up to 72 cables without connectors
- ▶ High strain relief thanks to the double membrane
- ▶ Cost efficient solution
- ▶ High IP grade (IP66)
- ▶ ATEX version on request (see sec. 7)



Model	Code	Cable nr. - Ø cable min/max [mm]	Dimensions [mm]		Pcs /pack
			Cut-out	Plate	
DES PDM KN 72G	1732040072	42 - 2,8 / 6,5 21 - 4,6 / 10,2 6 - 8,6 / 16,2 3 - 14,5 / 22	192 x 62	221 x 90	1
DES PDM KN 72B	1732041073				

The DES PDM KN is an alternative solution to standard cable glands on electrical, electronic and telecommunication cabinets and equipment.

The cable is pushed through the front membrane, whilst the second membrane increases the strain relief and liquid resistance.

Technical data

Material: TPE

Flammability: self-extinguishing acc. to UL94-V0

Temperature: -40°C... +105°C (static)

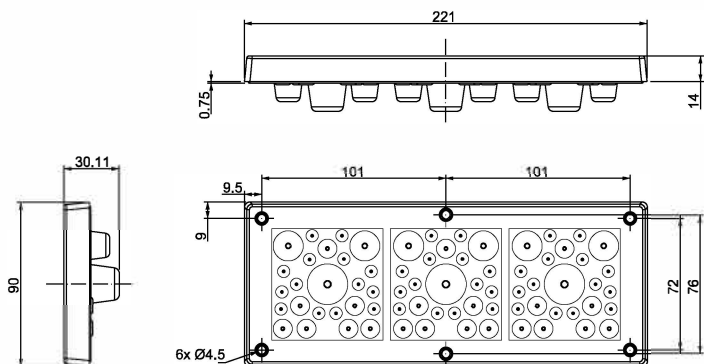
Features: halogens and silicones free

Related products

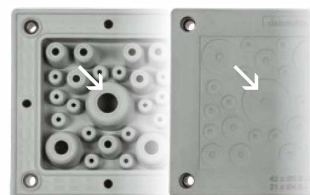
Plugs IFP

2

Dimensions [mm]



Double parallel membrane



IP66

NEMA 12



ECOLAB

UL94-V0



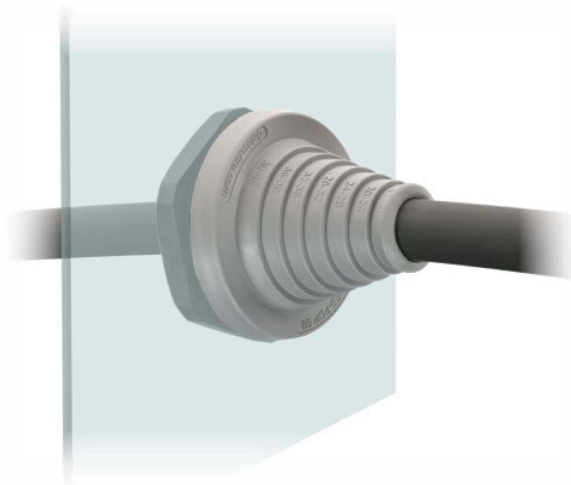
RoHS COMPLIANT





Round base, cone-shaped cable entry plate with locknut

- ▶ For diameters from 8 to 55 mm
- ▶ Reinforcing base plate
- ▶ Cost efficient solution
- ▶ UL94-V0 for grey and black
- ▶ ATEX version on request (see sec. 7)



Model	Code	Cable nr. - Ø cable min/max [mm]	Thread x 1,5	Dimensions [mm]			Pcs /pack
				Cut-out	Ø P	H	
DES PDP 40G	1732050040	1 - 8 / 29	M40	40,5	54	62	10
DES PDP 50G	1732050050	1 - 17 / 42	M50	50,5	64	50	
DES PDP 63G	1732050063	1 - 23 / 55	M63	63,5	77	62	
DES PDP 40B	1732052040	1 - 8 / 29	M40	40,5	54	62	
DES PDP 50B	1732052050	1 - 17 / 42	M50	50,5	64	50	
DES PDP 63B	1732052063	1 - 23 / 55	M63	63,5	77	62	

The DES PDP is available in M40, M50 and M63 sizes, enabling non-terminated cables with diameter from 8 to 55mm to pass through the walls of the electrical cabinets.

The reinforcing base plate increases the stability when large cables are used.

Technical data

Material: TPE

Flammability: self-extinguishing acc. to UL94-V0

Temperature: -40°C... +105°C (static)

Features: halogens and silicones free

Related products

Hydraulic punch driver HY360

Dimensions [mm]

