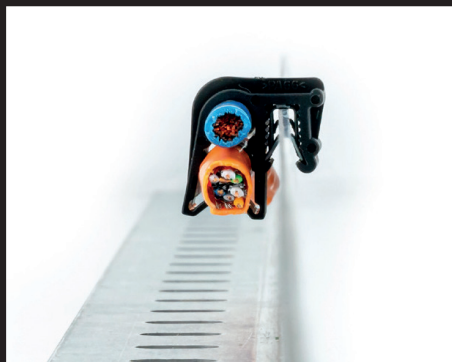
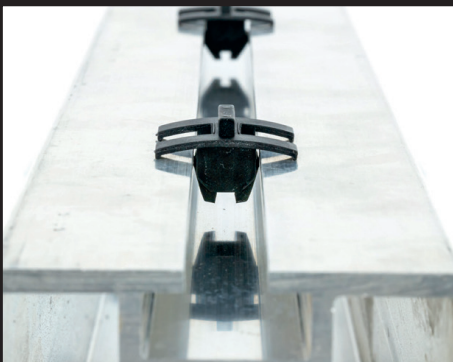
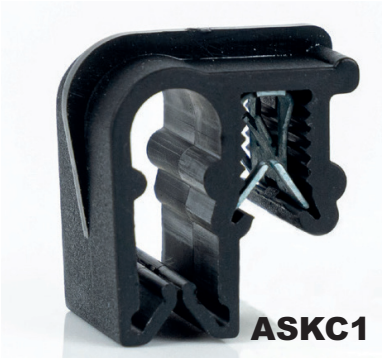




Cable management solutions for the solar industry



SOLAR CLIPS



ASKC1

Solar clips are a time-saving solution when managing cables for solar panels. The clips are quick and easy to use without the use of tools. Boxco supplies three types of clips that are suitable for different solar applications. Our clips are made of plastic (polyamide 6.6 HS) and are impact, heat and weather resistant and robust.

Which solar clip do you need?

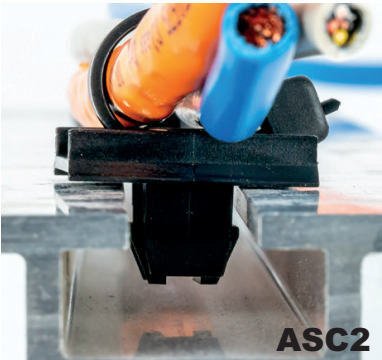
Solar clips are ideal for attaching cables, wires and tubes to a profile. To choose the right type of solar clip, you need to take into account the dimensions of the profile. The types ASC1 and ASC2 can be mounted, in combination with a cable tie, in a M8 or M10 aluminium profile. The type of clip ASKC1 can be mounted on a profile without a cable tie. This clip is designed for the attachment of two cables with a diameter of 6 mm.

Material specifications:

- Plastic clip: Polyamide 6.6 HS, black, impact resistant, heat resistant, UV resistant
- Cable tie: Polyamide 6.6 HS, black, impact resistant, heat resistant, UV resistant
- Temperature range: -40 °C up to +120 °C (short time 140 °C)
- Metal clamp material: Spring steel, hardened coated surface to ensure protection against corrosion



ASC1



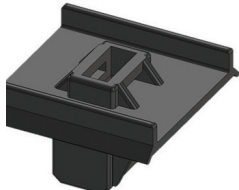
ASC2



ASKC1



ASC1



ASC2

TYPES OF SOLAR CLIPS

Fixation clip type	Mounting of clip	Mounting of cable	Supplied with cable tie
ASKC1	Profile thickness of 0.7 - 3.0 mm	2x 6.0 mm, without cable tie	No
ASC1	M10 / 7.0 mm deep	Fixation with cable tie	No
ASC1 *	M10 / 7.0 mm deep	Fixation with cable tie	Yes
ASC2	M8 / 6.9 mm deep	Fixation with cable tie	No
ASC2 *	M8 / 6.9 mm deep	Fixation with cable tie	Yes

* = Supplied with cable tie: 200 x 4.8 mm (PA 6.6 / black)



EDGE CLIPS



AKC15

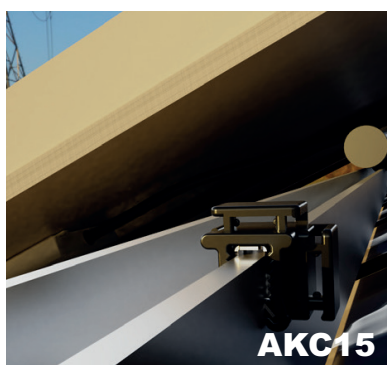
Edge clips are easy to mount fixation clips that can be mounted on a profile or in a vehicle. Edge clips offer a safe and reliable option for attaching and guiding your cables, wires or tubes. Boxco supplies high-quality plastic edge clips made of polyamide 6.6 HS. The clips are robust and are impact, heat and weather resistant.

Which edge clips do you need?

To choose the right type of edge clip, you should take into account the profile thickness and the way in which the cable will be mounted. Boxco offers edge clips for different applications: with the cable tie fastening on top or on the side of the clip and edge clips where the cable tie can be attached right-angled on or in longitudinal direction of the profile.

Material specifications:

Plastic clip:	Polyamide 6.6 HS, black, impact resistant, heat resistant, UV resistant
Cable tie:	Polyamide 6.6 HS, black, impact resistant, heat resistant, UV resistant
Temperature range:	-40 °C up to +120 °C (short time 140 °C)
Metal clamp material:	Spring steel, hardened coated surface to ensure protection against corrosion



AKC15



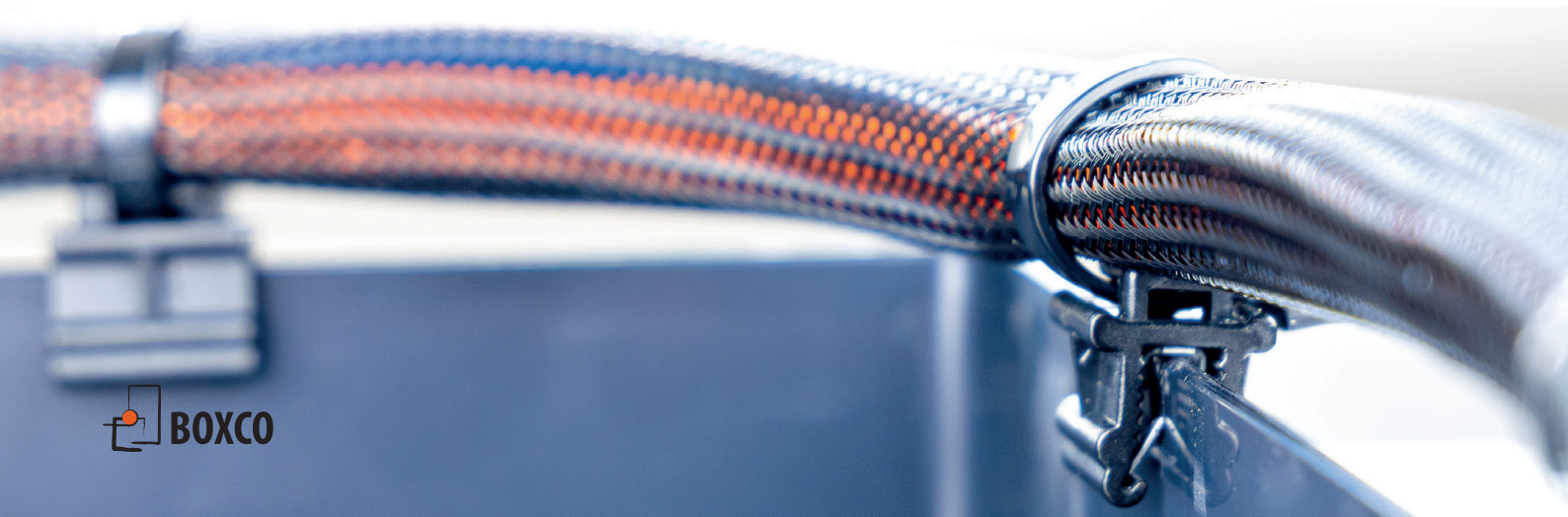
AKC19

TYPES OF SOLAR CLIPS

Fixation clip type	Profile thickness (in mm)	Cable tie fastening	Positioning of cable tie in relation to profile
AKC1 *	0.7 - 3.0	Top side	Right-angled on the profile
AKC2 *	0.7 - 3.0	Side	Right-angled on the profile
AKC3 *	0.7 - 3.0	Top side	Longitudinal direction of the profile
AKC5 *	0.7 - 3.0	Side	Longitudinal direction of the profile
AKC15*	0.7 - 3.0	Top and side	Four directions
AKC17 **	0.7 - 3.0	Top side	Right-angled on the profile
AKC18 **	0.7 - 3.0	Side	Right-angled on the profile
AKC19 **	0.7 - 3.0	Top side	Longitudinal direction of the profile
AKC20 **	0.7 - 3.0	Side	Longitudinal direction of the profile
AKC107 *	3.0 - 6.0	Top and side	Four directions
AKC4 *	3.0 - 6.0	Top side	Longitudinal direction of the profile
AKC87 *	3.0 - 6.0	Top side	Longitudinal direction of the profile
AKC88 *	3.0 - 6.0	Top side	Right-angled on the profile
AKC89 *	3.0 - 6.0	Side	Right-angled on the profile
AKC90 *	3.0 - 6.0	Side	Longitudinal direction of the profile

* = Also available with cable tie: 200 x 4.8 mm (PA 6.6 / black)

** = Delivered with integrated cable tie: 160 x 3.6 mm (PA 6.6)



EDGE CLIPS FOR CORRUGATED TUBING



Edge clips for corrugated tubing offer a safe and reliable option for attaching and guiding corrugated tubing. You can easily mount the clips on a profile or in a vehicle without additional tools or glue. Boxco supplies high-quality mounting clips. This makes it easy to select a clip that is suitable for your intended application(s). Our edge clips for corrugated tubing are made of plastic (polyamide 6.6 HS) and have a good robustness and are impact, heat and weather resistant.

Which edge clips do you need?

Our edge clips for corrugated tubing are designed for guiding corrugated tubes on a plastic or metal profile. To choose the right type of edge clip for corrugated tubing, you should take into account the outer diameter of the corrugated tube, the profile thickness and the way in which the corrugated tube will be mounted

Material specifications:

Plastic clip: Polyamide 6.6 HS, black, impact resistant, heat resistant, UV resistant
 Temperature range: -40 °C up to +120 °C (short time 140 °C)
 Metal clamp material: Spring steel, hardened coated surface to ensure protection against corrosion

EDGE CLIPS FOR CORRUGATED TUBING

Fixation clip type	Profile thickness (in mm)	NW size for conduits	Position of corrugated tube in relation to profile	Direction of corrugated tube in relation to profile
AKC24	0.7 - 3.0	4.5	Top side	Longitudinal direction of the profile
AKC21	0.7 - 3.0	7.5	Top side	Longitudinal direction of the profile
AKC32	0.7 - 3.0	17.0	Top side	Longitudinal direction of the profile
AKC30	3.0 - 6.0	4.5	Top side	Longitudinal direction of the profile
AKC12	3.0 - 6.0	13.0	Top side	Longitudinal direction of the profile
AKC23	0.7 - 3.0	4.5	Top side	Right-angled on the profile
AKC22	0.7 - 3.0	10,0	Top side	Right-angled on the profile
AKC31	0.7 - 3.0	13.0	Top side	Right-angled on the profile
AKC35	0.7 - 3.0	2x 10.0	Side	Longitudinal direction of the profile
AKC25	0.7 - 3.0	4.5	Side	Longitudinal direction of the profile
AKC26	0.7 - 3.0	10.0	Side	Longitudinal direction of the profile
AKC36	0.7 - 3.0	13.0	Side	Longitudinal direction of the profile
AKC28	3.0 - 6.0	4.5	Side	Longitudinal direction of the profile
AKC29	3.0 - 6.0	7.5	Side	Longitudinal direction of the profile
AKC27	3.0 - 6.0	10.0	Side	Longitudinal direction of the profile



USER INSTRUCTIONS TO BOXCO FIXATION CLIPS

We supplies a wide range of different clips. These clips are available in 4 different types:

1. Edge clips
2. Edge clips for corrugated tubing
3. Hole clips with fir tree or arrowhead
4. Solar clips for common profiles in solar and PV panel installation

All BOXCO Fixation clips provide an efficient and easy way to install and guide cables in several industries.



1. Select the correct edge size / hole diameter.
The BOXCO Edge Clips are available for 2 different profile sizes:
0.7 - 3.0mm and 3.0 - 6.0mm.

The BOXCO Hole Clips are available for different hole diameter & sheet thickness combinations. Please find the according specification in the data sheets, catalogues or online product page.

2. Select the correct clip depending on the direction and position the conduit/cable should be guided along the edge.
The BOXCO Edge Clips can have one of the following orientations of the conduit/cable:



*at the side of the clip, along/
parallel to the edge*



*Grip in longitudinal direction of the
profile, on the side of the clip*

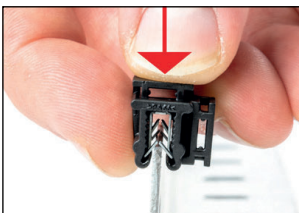


*on top of the clip and along/
parallel to the edge*



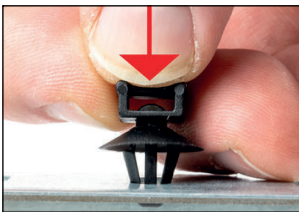
*Cable tie on top of the clip,
longitudinal direction on to the edge*

There are universal clips like shown on the picture above that allow you to freely choose the direction and position. If your application always requires only one and always the same orientation, then we recommend to use the according clip for that certain mounting, to be as cost- and material-efficient as possible.



3. Push the selected clip all the way straight down onto the edge or in the hole.

When you are on the lower end of the suitable profile thickness the force required to push it will be lower than when you are at the higher end of the suitable profile thickness.



The hole clips with arrowhead (see left) have to be pushed in until the head snaps at the bottom of the hole. The top cover of the clip should look a little curved like illustrated on the second photo on the left.



Attention!

The fixation clips are designed to reliably stay in place. Due to that, be aware that removing them or trying to remove them can damage the profile or metal sheet they are attached to. The metal clamp of the edge clips or tools to cut the hole clips can cause scratches on the surface.



For more information visit
www.boxco.se



BOXCO

Boxco AB
Gjutmästare Rosbergs väg 8
176 69 Järfälla

Tel: 08-580 210 10
E-post: info@boxco.se