



*Quality Products. Service Excellence.*

## ABS Plastic Watertight Enclosures *RP Series*

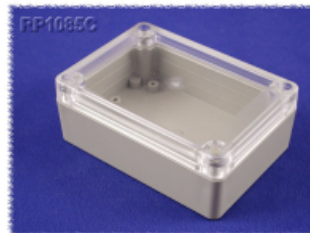
Solid and Clear Lid

### Key Features

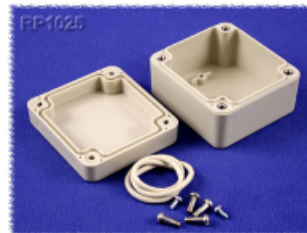


- Ideally suited for mounting printed circuit boards or components.
- Molded from general purpose ABS plastic (material carries a UL flammability rating of UL94 HB).
- Color is a light gray with a light texture. Also available with a clear polycarbonate lid (see table below).
- Gasketed lid with two piece "tongue & groove" construction provides protection against access of oil, dust, and water.
- Rubber gasket is included and must be field installed.
- Lid includes smooth recessed area for membrane, label or silkscreen (see chart below for recess size).
- Designed to meet IP 65.
- Lid is secured with self captivating M3.5 stainless steel machine screws (included), threaded into integral stainless steel bushings (for repetitive assembly & disassembly). All stainless steel hardware to avoid corrosion caused by dissimilar metals.
- Lid screws are self captivating (lid holes are threaded with the first installation of lid screws).
- Internal features are maximized for mounting options:
  - Internal DIN rail mounting tabs molded in.
  - Options vary with size.

### Photos



Shown with a clear lid.

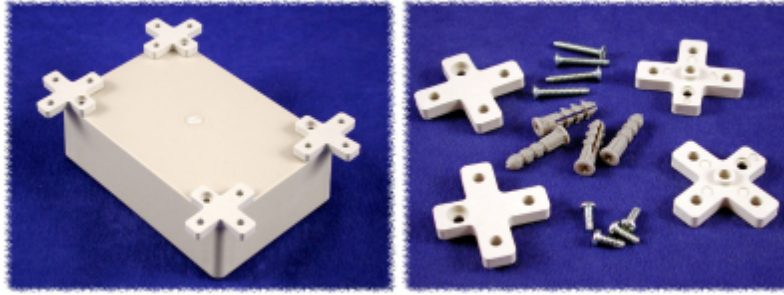


Internal view. Includes gasket and hardware.

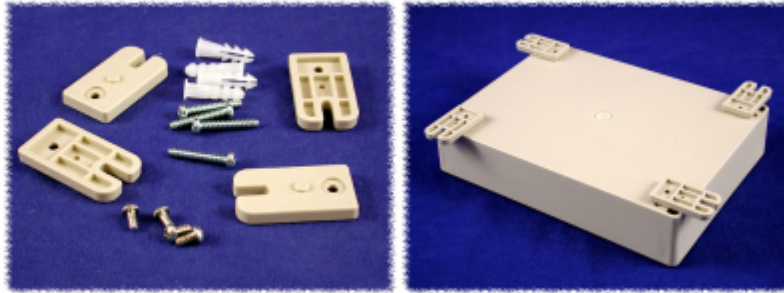
### Wall Mounting Feet (ABS Plastic)

- See table below for compatibility.
- Includes mounting hardware and wall anchors.
- Shown below attached to ABS plastic RP series enclosure.

Part Number **MF0045**



Part Number **MF0055**



Part Number (Opaque Lid)	Part Number (Clear Lid)	Length	Width	Height (Including Lid)	Lid Recess Size	Mounting Feet Kit
RP1025	RP1025C	2.56	2.36	1.57	1.54 x 2.05	MF0045
RP1065	RP1065C	3.35	3.15	2.17	2.32 x 2.83	MF0045
RP1085	RP1085C	4.13	2.95	1.57	2.56 x 3.07	MF0045
RP1095	RP1095C	4.13	2.95	2.17	2.56 x 3.07	MF0045
RP1135	RP1135C	4.92	3.35	2.17	3.03 x 3.90	MF0045
RP1205	RP1205C	5.71	4.13	1.57	4.57 x 3.78	MF0045
RP1215	RP1215C	5.71	4.13	2.36	4.57 x 3.78	MF0045
RP1175	RP1175C	6.50	3.35	2.17	2.76 x 5.47	MF0045
RP1245	RP1245C	6.50	4.92	2.95	5.43 x 4.57	MF0045
RP1285	RP1285C	7.32	5.75	2.95	5.08 x 5.91	MF0045
RP1455	RP1455C	8.66	6.50	2.36	7.28 x 5.91	MF0055
RP1465	RP1465C	8.66	6.50	3.35	7.28 x 5.91	MF0055

*Data subject to change without notice*

© 2018. Hammond Manufacturing Ltd. All rights reserved.