



PERFECT MAKES **BOXCO!**



Our *passion* is enclosures.



aluDOOR

The new generation of enclosure with door, featuring an unmistakable progressive design

aluDOOR

The new generation of enclosure with door, featuring an unmistakable progressive design



PERFECT MAKES **BOXCO!**



Our passion is enclosures.

ROLEC. From tradition comes progress.

Milestones in enclosure technology.



aluKOM 1970 a global success reproduced many times over

Originally developed as a "terminal enclosure", it has become a popular protective enclosure for electronic components around the world in the rapidly growing industrial electronics market.



aluCASE 2002 our interpretation of enclosure design

Conceived as an enclosure for the uncompromising protection of modern industrial electronics. Fastening while the lids are closed, concealed screw level, lid recess for membrane keypads, integrated lid supports.



aluDOOR 2022 from a passion for perfection

Developed by the team players at ROLEC with clearly defined styling in a new exterior design. With the accomplishments of the successful aluCASE series, the enclosures become "compact cabinets" with structurally integrated lid hinges.



The unique design of aluDOOR

There is very little scope for design when it comes to standardised die cast metal enclosures. aluDOOR enclosures are probably the first aluminium enclosures in series production with an independent progressive design. The contour necessitated by the design, which makes these enclosures "compact cabinets", was continued on the other three sides. The standard colour of this new enclosure series - RAL 7016 anthracite grey - accentuates the special design.



The main features of the aluDOOR design:



Stainless steel lid screws and threaded inserts – a completely corrosion-free connection for extreme conditions.



Covered assembly level according to the ROLEC principle with silver matt-coated aluminium design covers.



High degree of ingress protection IP 66, IP 67 and IP69 K due to foamed-in polyurethane gaskets.



Lid and base with threaded pillars for mounting internal components.



ADO enclosure lid, flat, without recess.



ADF enclosure lid, with recess for fitting a membrane keypad or product label.

The closure technology of the aluDOOR design:



Push in the lid with integrated hinge pin.



Secure the hinge pin with two screws.



100° opening angle.



After securing the hinge pin, screw the lid shut with just two screws.

aluDOOR technical data

Enclosure material

Die cast aluminium

Design covers

Extruded aluminium profile
Silver matt powder coating

Internal mounting

Threaded mounting pillars in the lid and base section.

Fastening

Separate screw channels

Lid screws

Stainless steel A2, M5 with TX25

Gasket

Foamed, polyurethane (PUR)

Ingress protection

IP 66 / EN 60529
IP 67 / EN 60529
IP 69K / ISO 20563

Coating

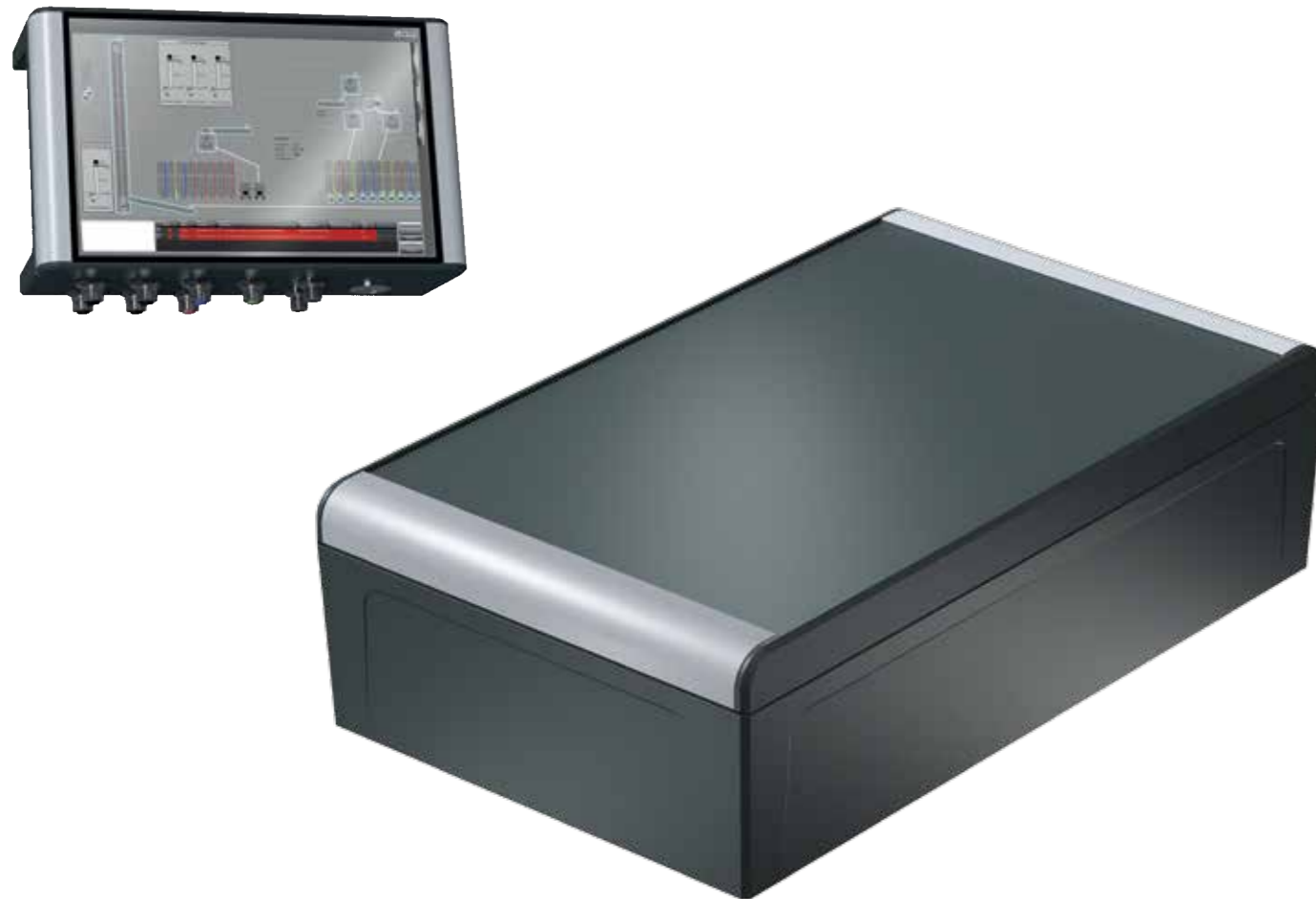
RAL 7016

OPTIONAL:

- Special colours on request
- Design covers alternatively available in RAL 7016
- EMC gasket
- Mounting plate



aluDOOR ADF: Version with lid recess



aluDOOR ADO: Version with flat lid



| Type | Art. no. | Length L | Width W | Height H | Weight g | Mounting dimension D | Mounting dimension E |
|---------|-------------|----------|---------|----------|----------|----------------------|----------------------|
| ADF 090 | 133.090.000 | 120 | 90 | 70 | 600 | 100 | 70 |
| ADF 092 | 133.092.000 | 160 | 90 | 70 | 705 | 140 | 70 |
| ADF 110 | 133.110.000 | 140 | 110 | 80 | 785 | 120 | 90 |
| ADF 112 | 133.112.000 | 200 | 110 | 80 | 975 | 180 | 90 |
| ADF 130 | 133.130.000 | 160 | 130 | 80 | 945 | 140 | 110 |
| ADF 132 | 133.132.000 | 220 | 130 | 80 | 1150 | 200 | 110 |
| ADF 150 | 133.150.000 | 180 | 150 | 90 | 1180 | 160 | 130 |
| ADF 152 | 133.152.000 | 260 | 150 | 90 | 1490 | 240 | 130 |
| ADF 170 | 133.170.000 | 200 | 170 | 90 | 1370 | 180 | 150 |
| ADF 172 | 133.172.000 | 280 | 170 | 90 | 1700 | 260 | 150 |

| Type | Art. no. | Length L | Width W | Height H | Weight g | Mounting dimension D | Mounting dimension E |
|---------|-------------|----------|---------|----------|----------|----------------------|----------------------|
| ADO 090 | 134.090.000 | 120 | 90 | 70 | 605 | 100 | 70 |
| ADO 092 | 134.092.000 | 160 | 90 | 70 | 710 | 140 | 70 |
| ADO 110 | 134.110.000 | 140 | 110 | 80 | 790 | 120 | 90 |
| ADO 112 | 134.112.000 | 200 | 110 | 80 | 980 | 180 | 90 |
| ADO 130 | 134.130.000 | 160 | 130 | 80 | 950 | 140 | 110 |
| ADO 132 | 134.132.000 | 220 | 130 | 80 | 1160 | 200 | 110 |
| ADO 150 | 134.150.000 | 180 | 150 | 90 | 1190 | 160 | 130 |
| ADO 152 | 134.152.000 | 260 | 150 | 90 | 1500 | 240 | 130 |
| ADO 170 | 134.170.000 | 200 | 170 | 90 | 1380 | 180 | 150 |
| ADO 172 | 134.172.000 | 280 | 170 | 90 | 1710 | 260 | 150 |

Welcome to the inventors of the industrial enclosure.

A family business with a long tradition and aware of its responsibility – learn more about us.



Our *passion* is enclosures.



The ROLEC principle: Technical perfection with outstanding quality.

Armed with a wealth of inventiveness and extensive competence, we develop enclosures for industrial electronics, command enclosures and sophisticated suspension arm systems. Our company founders, Friedhelm and Matthias Rose, are pioneers of enclosure technology. Together with Bettina Rose, they established a family business with 135 employees. The company's speciality: installation-ready enclosures, modified "just in time" according to customer specifications.

Distributed by Boxco AB, www.boxco.se

ROLEC

Gehäuse-Systeme GmbH
Kreuzbreite 2
D-31737 Rinteln

