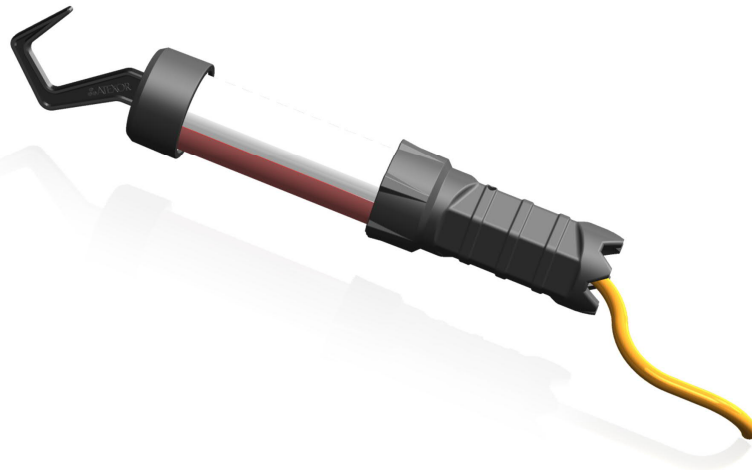




SLAM  SLAM® Semic SP



- ATEX CERTIFIED FOR ZONES 1 AND 21
- TEMPERATURE CLASS T4 • SAFE EYE® TECHNOLOGY • HIGH QUALITY LEDS AND COMPONENTS
- VERSATILE MOUNTING OPTIONS • SPECIALLY DESIGNED FOR COLD CLIMATES



SEMIC SP

SafeEye®



Distributed by BOXCO AB, +46 8 580 210 10
info@boxco.se - www.boxco.se



Boxco code	SSPxxxx	
Certification	EESF 20 ATEX 086X IECE _x EESF 21.0006X	
Certification marking	II 2G Ex mb op is IIC T5 Gb (24-42V)	II 2G Ex mb op is IIC T4 Gb (110V-230V)
	II 2G Ex mb op is IIB T5 Gb (24-42V 2P)	
Manufacturing date	07/2021	
Product description	SLAM [®] Semic SP, EX LED luminary for portable use	
Temperature classification	T5 or T4	
Operating temperature	-20°C ... +40°C	
Light source	1 LED module	
Light emitted at source	1050 lm (measured)	
Luminous flux	650 lm +/- 10%	
Colour temperature	5000K +/- 10%	
Colour rendering index	>80	
Photobiological safety	Exempt group (No marking required, safe in normal use)	
Supply Voltage (min-max)	24-42VAC/DC, -20%...+10% 110VAC/DC 230VAC	
Supply Current typical	375mA (24V)	215mA (42V)
	80mA (110V)	40mA (230V)
Electrical class	24-42V Class III 2P Class II	110-230V Class I
Input power (P)	9W	
Cable	H07RN-F 3x1,5mm ² 10m	H07RN-F 2x1,5mm ² 10m (2P only)
Plug options	ATX, CEAG, STAHL, MARECHAL	
Enclosure	Aluminium, polycarbonate, dissipative thermoplastic elastomer	
Ingress protection	IP68	
Weight (with cable and accessories)	1,2 kg	
Accessories	Protective film	

Product	Dimensions / mm		
	L1	L2	Ø
SLAM [®] Semic SP	285	367	64

