

Inquiry form profiPANEL-profiPLUS

Customer:

Contact partner:

Phone:

Email address:

Quantity/p.a.:

Target price:

Enclosure depth 90mm



Standard execution

Enclosure:	Extruded profiles, silver anodised
Front plate fixed:	3mm, silver anodised
Rear wall front frame:	3mm, silver anodised with lock and hinge
Rear wall desk:	3mm, silver anodised, screwed
Lock and hinge:	Powder coating, silver metallic
Edge cover:	Polyamid (PA), RAL7035
Ingress protection:	IP65 / EN 60529
Temperature range:	-20°C up to +60°C
External dimension HxW max.:	800 x 800mm
External dimension HxW min.:	150 x 150mm

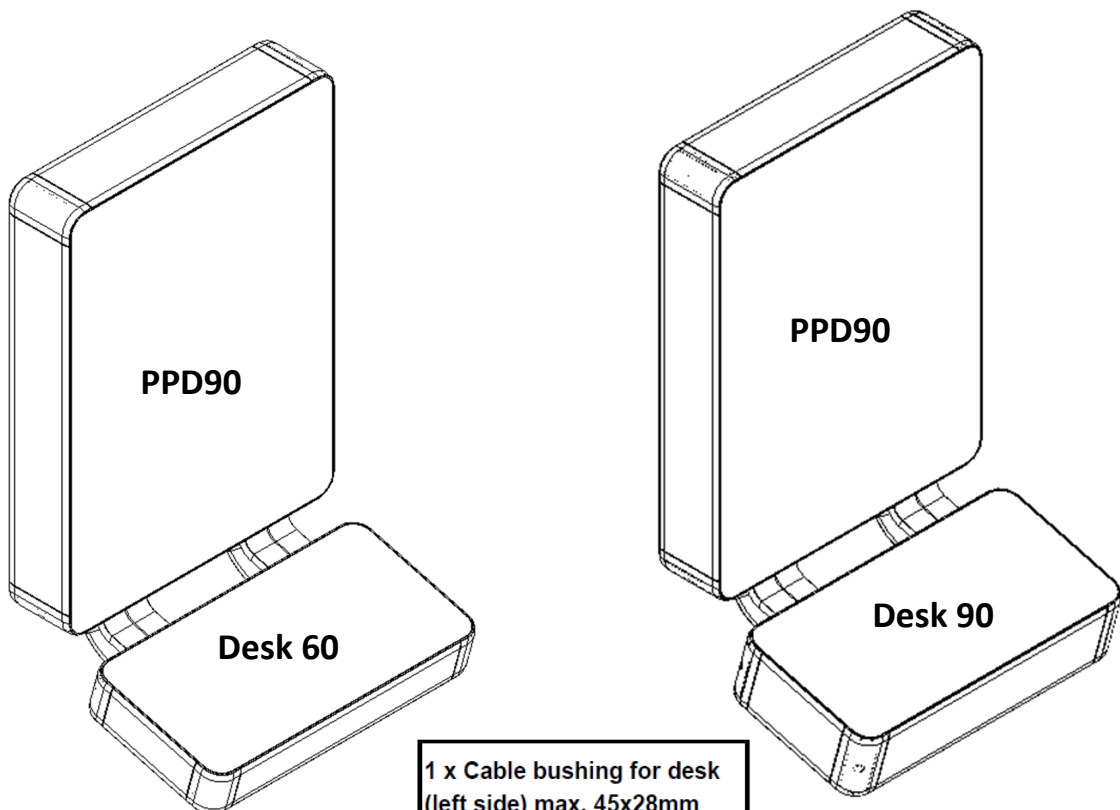
profiPANEL

Enclosure depth 90mm
(max. mounting depth 84mm)



Our *passion* is enclosures.

Enclosure combination



profiPANEL

**Enclosure depth 90mm
(max. mounting depth)**



Our passion is enclosures.

Enclosure / Desk dimensions high x width

Enclosure HxW: _____ mm

Desk HxW: _____ mm

Dimensions by installed equipment

Standard sizes HxW: 400 x 400mm 400 x 520mm 520 x 520mm 520 x 600mm

HMI Panel

SIEMENS

BECKHOFF



**Rockwell
Automation**

ICP IEI
INDUSTRIAL COMPUTER PRODUCTS

Schneider
Electric

ASEM
DIGITAL AUTOMATION TECHNOLOGIES

ADVANTECH

OMRON

Type/part.-no. _____

Others _____

Type/part.-no. _____

Circulation of air distance consider?

Yes

No

Further installed equipment / machining e.g. switch, push button and so on:



Our passion is enclosures.

Accessories (optional)

Rear wall variants

Front frame



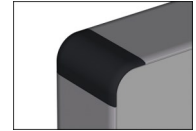
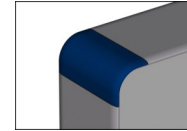
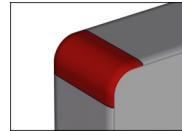
Bolted rear wall

Special colours for edge cover

RAL 3020
Traffic red

RAL 5017
Traffic blue

RAL 9005
Deep black



Handle system

PPD90 Desk



both side



complete



Desk

PPD90



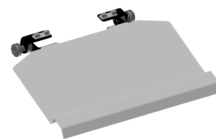
below



both side

Keyboard tray

Standard (450mm)



Tilt, lockably



Mouse tray only with
keyboard tray

Printing for front plate

(Printing file necessary)





Our passion is enclosures.

Mounting on suspension system profiPLUS 50

Upright version **

Hanging version **

Desk coupling *

VESA 75 *

* Mounting only on boldet rear wall

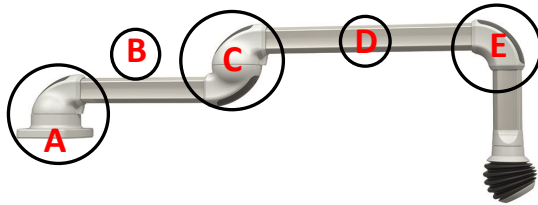
VESA 100 *

** Mounting only on the demant front frame

Wall connection **

Horizontal installation Please note: Maximum system length 2 m

*Not for over-head assembling



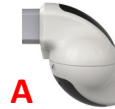
*Wall joint



*Socket joint



*Wall joint smart



*Socket joint smart



Optional:

Universal wall joint adjustment smart

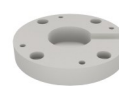


Universal socket joint adjustment smart



ITEM/Bosch:

Socket joint profile adjustment smart



Wall joint profile adjustment smart



Support profile B

250mm

500mm

750mm

1000mm

1500mm

_____mm



Intermediate joint

Support profile D

250mm

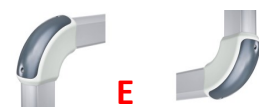
500mm

750mm

1000mm

1500mm

_____mm



Elbow



Signal light adaption



Our passion is enclosures.

Vertical installation



****It's not allowed with intermediate joint!**

Support profile B

250mm

500mm

750mm

1000mm

1500mm

_____mm



Support profile C

250mm

500mm

_____mm



Signal light adaption D

Signal light adaption E

Support profile F

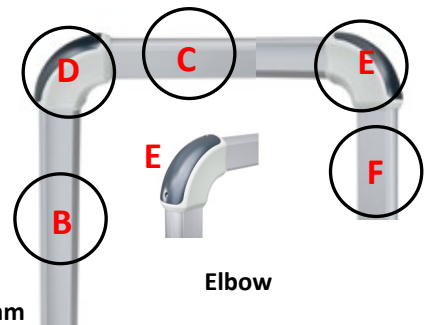
250mm

500mm

750mm

1000mm

_____mm



Enclosure couplings

Coupling



hanging



upright

*Coupling N



hanging



upright

Elbow coupling



hanging



upright

*Elbow coupling N



hanging



upright

Profile length F

L = 250mm

L = 500mm

L = 750mm

L = 1000mm

L = _____mm

*Desk coupling N



hanging



upright

*Elbow desk coupling N



hanging



upright

VESA adapter

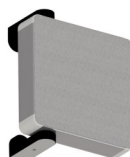


***Please note: Couplings with tilt adjustment for desk versions on request!**

Wall - Profile mounting

Wall connection (left side)

Cable bushing (above)



Desk connection

Cable bushing (left side)

