

Inquiry form profiPANEL-profiPLUS

Customer:

Contact partner:

Phone:

Email address:

Quantity/p.a.:

Target price:

Enclosure depth 60mm



Standard execution

Enclosure:	Extruded profiles, silver anodised
Front plate fixed:	3mm, silver anodised
Rear wall front frame:	3mm, silver anodised with lock and hinge
Rear wall desk:	3mm, silver anodised, screwed
Schloss und Scharnier:	Powder coating, silver metallic
Eckabdeckung:	Polyamid (PA), RAL7035
Schutzart:	IP65 / EN 60529
Temperaturbereich:	-20°C up to +60°C
External dimension HxW max.:	800 x 800mm
External dimension HxW min.:	150 x 150mm

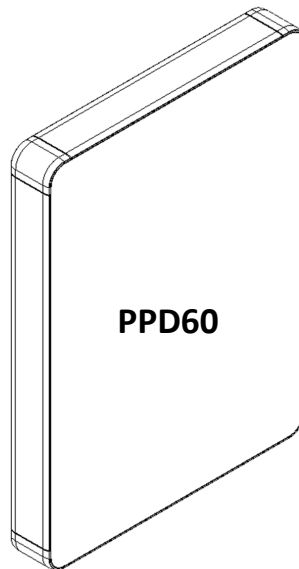
profiPANEL

Enclosure depth 60mm
(max. mounting depth 54mm)

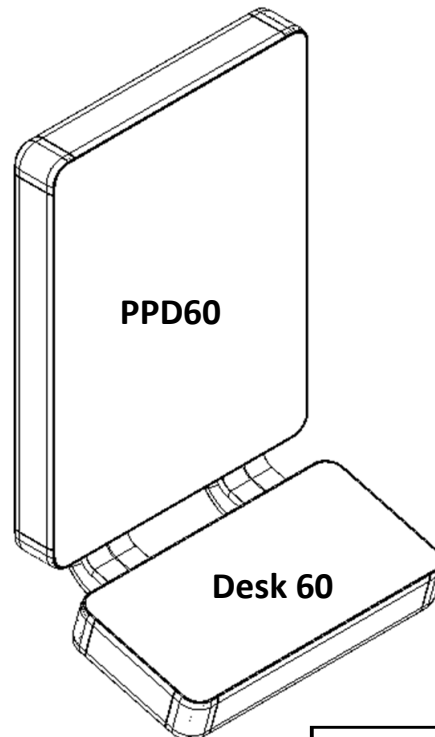


Our *passion* is enclosures.

Enclosure combination



PPD60



PPD60

Desk 60

1 x Cable bushing for desk
(left side) max. 45x28mm

profiPANEL

**Enclosure depth 60mm
(max. mounting depth 54mm)**



Our passion is enclosures.

Enclosure / Desk dimensions high x width

Enclosure HxW: _____ mm

Desk HxW: _____ mm

Dimensions by installed equipment

HMI Panel

SIEMENS

BECKHOFF



**Rockwell
Automation**

ICP iEi
INDUSTRIAL COMPUTER PRODUCTS

Schneider
Electric

ASEM
DIGITAL AUTOMATION TECHNOLOGIES

ADVANTECH

OMRON

Type/part.-no. _____

Others _____

Type/part.-no. _____

Circulation of air distance consider?

Yes

No

Further installed equipment / machining e.g. switch, push button and so on:



Our passion is enclosures.

Accessories (optional)

Rear wall variants

Front frame



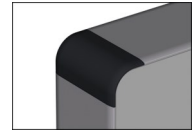
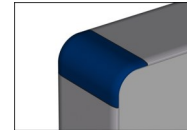
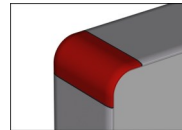
Bolted rear wall

Special colours for edge cover

RAL 3020
Traffic red

RAL 5017
Traffic blue

RAL 9005
Deep black



Handle system

PPD60 Desk



both side



complete



Desk

PPD60



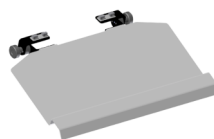
below



both side

Keyboard tray

Standard (450mm)



Tilted by
locking adjustment



Mouse tray only with
keyboard tray

Printing for front plate

(Printing file necessary)





Our passion is enclosures.

Mounting on suspension system profiPLUS 50

Upright version **

Hanging version **

Desk coupling *

VESA 75 *

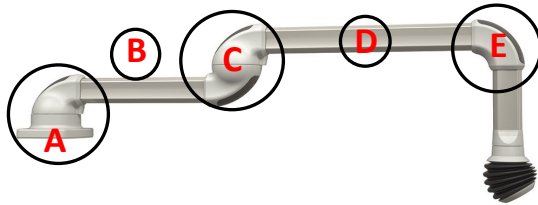
* Mounting only on boldet rear wall

VESA 100 *

** Mounting only on the demant front frame

Horizontal installation Please note: Maximum system lenght 2 m

*Not for over-head assembling



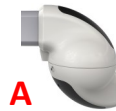
*Wall joint



*Socket joint



*Wall joint smart



*Socket joint smart



Optional:

Universal wall joint adjustment smart



Universal socket joint adjustment smart

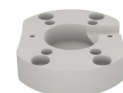


ITEM/Bosch:

Socket joint profile adjustment smart



Wall joint profile adjustment smart



Support profile B

250mm

500mm

750mm

1000mm

1500mm

_____mm



Intermediate joint

Support profile D

250mm

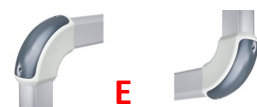
500mm

750mm

1000mm

1500mm

_____mm



Elbow



Signal light adaption



Our passion is enclosures.

Vertical installation



****It's not allowed with intermediate joint!**

Support profile **B**

250mm

500mm

750mm

1000mm

1500mm

_____mm



Support profile **C**

250mm

500mm

_____mm



Support profile **F**

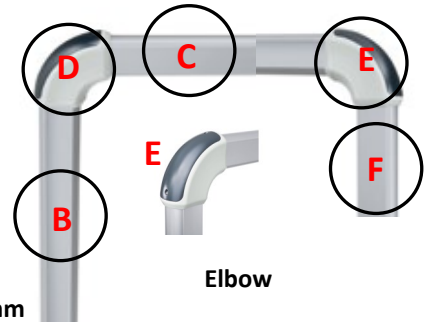
250mm

500mm

750mm

1000mm

_____mm



Signal light adaption **D**

Signal light adaption **E**

Enclosure couplings

***Please note: Couplings with tilt adjustment for desk versions on request!**

Panel coupling



*Panel coupling N



E Elbow panel coupling



E *Elbow panel coupling N



Profile length **F**

L = 250mm

L = 500mm

L = 750mm

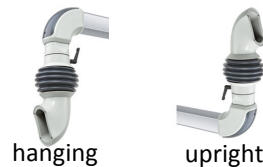
L = 1000mm

L = _____mm

*Desk coupling N



E *Elbow desk coupling N



VESA Adapter

