

# Inquiry form profiPANEL-profiPLUS

**Customer:**

**Contact partner:**

**Phone:**

**Email address:**

**Quantity/p.a.:**

**Target price:**

**Enclosure depth 150mm**



## Standard execution

Enclosure:	Extruded profiles, silver anodised
Front plate fixed:	3mm, silver anodised
Rear wall front frame:	3mm, silver anodised with lock and hinge
Rear wall desk:	3mm, silver anodised, screwed
Lock and hinge:	Powder coating, silver metallic
Edge cover:	Polyamid (PA), RAL7035
Ingress protection:	IP65 / EN 60529
Temperature range:	-20°C up to +60°C
External dimension HxW max.:	800 x 800mm
External dimension HxW min.:	150 x 150mm

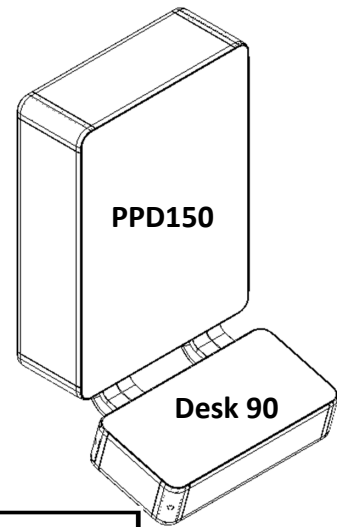
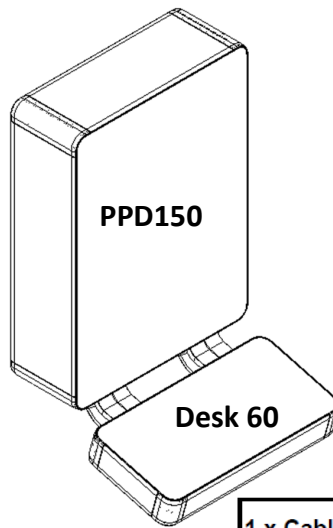
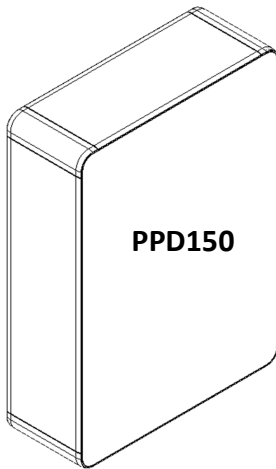
# profiPANEL

Enclosure depth 150mm  
(max. mounting depth 144mm)

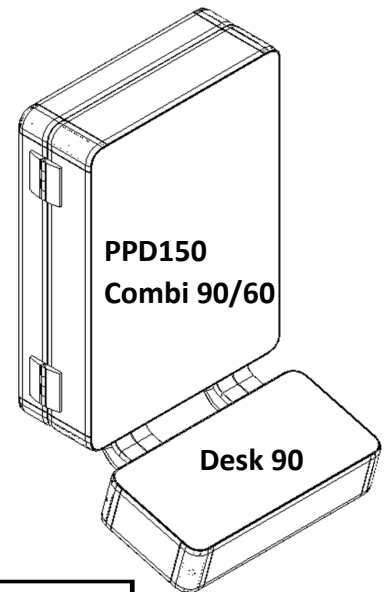
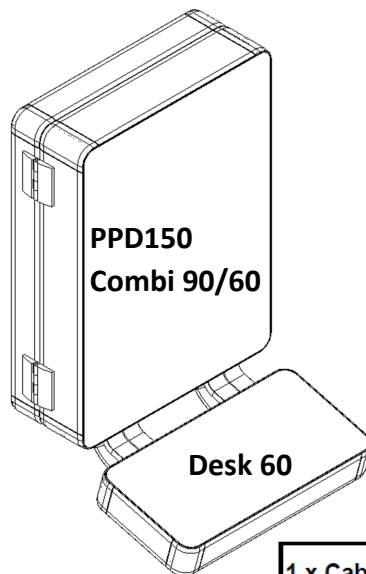


Our passion is enclosures.

## Enclosure combination



1 x Cable bushing for desk  
(left side) max. 45x28mm



1 x Cable bushing for desk  
(left side) max. 45x28mm

# profiPANEL

**Enclosure depth 150mm  
(max. mounting depth 144mm)**



*Our passion* is enclosures.

## Enclosure / Desk dimensions high x width

Enclosure HxW: \_\_\_\_\_ mm

Desk HxW: \_\_\_\_\_ mm

Dimensions by installed equipment

## HMI Panel

**SIEMENS**

**BECKHOFF**



**Rockwell  
Automation**

**ICP IEI**  
INDUSTRIAL COMPUTER PRODUCTS

**Schneider**  
Electric

**ASEM**  
DIGITAL AUTOMATION TECHNOLOGIES

**ADVANTECH**

**OMRON**

Type/part.-no. \_\_\_\_\_

Others \_\_\_\_\_

Type/part.-no. \_\_\_\_\_

**Circulation of air distance consider?**

Yes

No

Further installed equipment / machining e.g. switch, push button and so on:



Our passion is enclosures.

### Accessories (optional)

#### Rear wall variants

Front frame



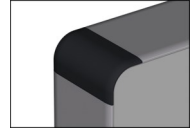
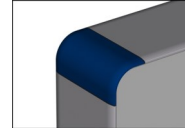
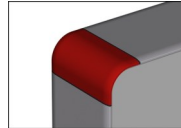
Bolted rear wall

#### Special colours for edge cover

RAL 3020  
Traffic red

RAL 5017  
Traffic blue

RAL 9005  
Deep black



### Handle system

PPD150 Desk



both side



complete



Desk

PPD150



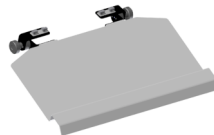
below



both side

### Keyboard tray

Standard (450mm)



Tilt, lockably



Mouse tray only with keyboard tray

### Printing for front plate

(Printing file necessary)





Our passion is enclosures.

**Mounting on suspension system profiPLUS 50**

Upright version \*\*

Hanging version \*\*

Desk coupling \*

VESA 75 \*

\* Mounting only on boldet rear wall

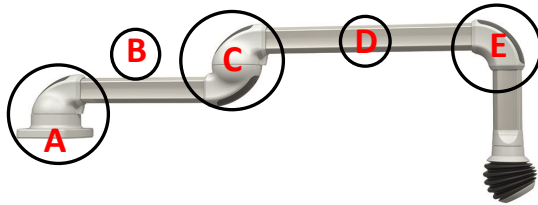
VESA 100 \*

\*\* Mounting only on the demant front frame

Wall connection \*\*

**Horizontal installation** Please note: Maximum system length 2 m

\*Not for over-head assembling



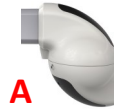
\*Wall joint



\*Socket joint



\*Wall joint smart



\*Socket joint smart



**Optional:**

Universal wall joint adjustment smart

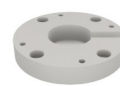


Universal socket joint adjustment smart

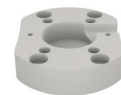


**ITEM/Bosch:**

Socket joint profile adjustment smart



Wall joint profile adjustment smart



**Support profile B**

250mm

500mm

750mm

1000mm

1500mm

\_\_\_\_\_mm



Intermediate joint

**Support profile D**

250mm

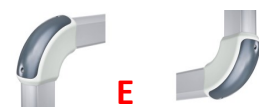
500mm

750mm

1000mm

1500mm

\_\_\_\_\_mm



Elbow



Signal light adaption



Our passion is enclosures.

## Vertical installation



**\*\*It's not allowed with intermediate joint!**

### Support profile B

250mm

500mm

750mm

1000mm

1500mm

\_\_\_\_\_mm



### Support profile C

250mm

500mm

\_\_\_\_\_mm



Signal light adaption D

Signal light adaption E

### Support profile F

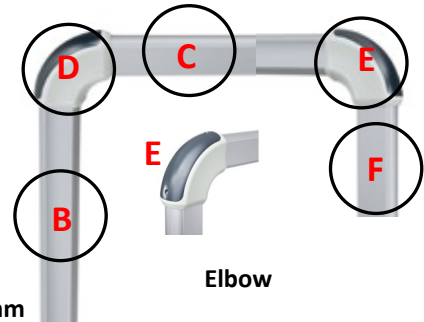
250mm

500mm

750mm

1000mm

\_\_\_\_\_mm



Elbow

## Enclosure couplings

### Coupling



hanging

upright

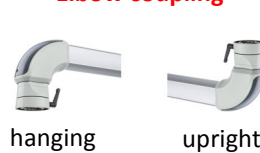
### \*Coupling N



hanging

upright

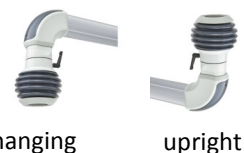
### Elbow coupling



hanging

upright

### \*Elbow coupling N



hanging

upright

### Profile length F

L = 250mm

L = 500mm

L = 750mm

L = 1000mm

L = \_\_\_\_\_mm

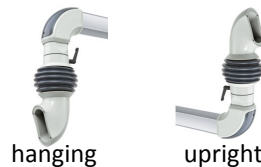
### \*Desk coupling N



hanging

upright

### \*Elbow desk coupling N



hanging

upright

### VESA Adapter

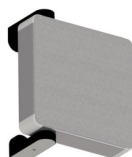


**\*Please note: Couplings with tilt adjustment for desk versions on request!**

## Wall - Profile mounting

Wall connection (left side)

Cable bushing (above)



Desk connection

Cable bushing (left side)

