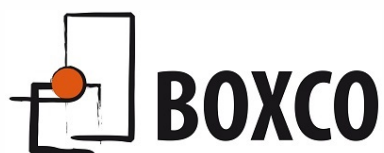
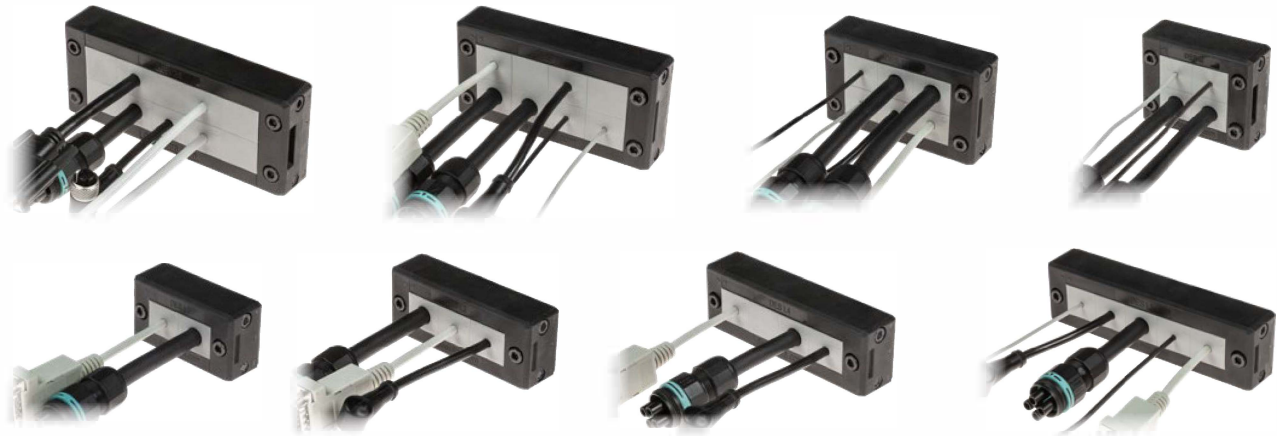


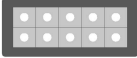






Frames and plates ATEX





Splittable frames for cables with and without connectors



Model	Code	Dimensions [mm]	Cut-out [mm]	Pcs /pack
DES 24A	1731310024	 146 x 61	112 x 39	1
DES 16A	1731310016	 120 x 61	86 x 39	
DES 10A	1731310010	 99 x 61	63 x 39	
DES QA	1731310008	 74 x 61	40 x 39	
DES L2A	1731310002	74 x 41	40 x 18	
DES L3A	1731310003	 99 x 41	63 x 18	
DES L4A	1731310004	 120 x 41	86 x 18	
DES L5A	1731310005	 146 x 41	112 x 18	
Upon request:	1731991020	Set of 4 mounting screws in AISI304 with Black Dacromet finishing		10

The DES cable entry system consists of a splittable frame designed to accommodate small (SPP), multiple (X) or large (SPG) inserts for cables. The inserts can be freely positioned into the frame.

The overmolded gasket guarantees faster installation times and the complete V0 self-extinguishing of the system.

DES ATEX series can be used in zone 2 and 22 according to IEC 60079-10.

Technical data

Material: PP+GF

Flammability: self-extinguishing acc. to UL94-V0

Temperature: -40°C... +155°C (static)

Features: halogens and silicones free

Related products



Inserts SPG



Inserts SPP



Inserts SPP 2x

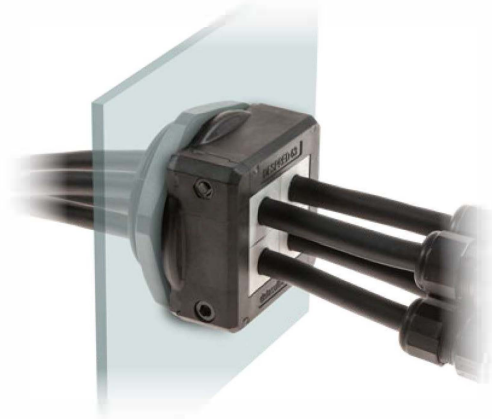


Inserts SPP 4x

Hydraulic punch driver HY360

Splittable cable gland with locknut

- ▶ Frame screws in AISI304 Stainless Steel with Black Dacromet finishing
- ▶ M25, M32 and M63 metric sizes
- ▶ IP66 and Nema 4X certified
- ▶ Strain relief according to EN 62444
- ▶ Sturdy construction IK10
- ▶ Integrated gasket



Model	Code	Some possible configurations	Cut-out Ø [mm]	Pcs /pack
DESPRED 25A	1731350025		25,5	10
DESPRED 32A	1731350032		32,5	
DESPRED 63A	1731350063		63,5	
DDM SUB-D9	1731052032	Special size M32 for SUB-D9		10

The DESPRED series are splittable cable glands for metric threads.

The 63 model can be used with small, multiple and large inserts for cables up to 34 mm diameter. With multiple inserts it is possible to accommodate up to 16 cables. Future cable size changes can also be easily accommodated using various inserts.

DESPRED ATEX series can be used in zone 2 and 22 according to IEC 60079-10.

Technical data

Material: PP+GF

Flammability: self-extinguishing acc. to UL94-V0

Temperature: -40°C... +155°C (static)

Features: halogens and silicones free

Related products



Inserts SPG



Inserts SPP



Inserts SPP 2x



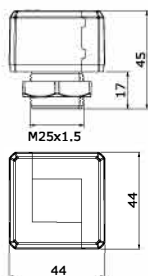
Inserts SPP 4x

Hydraulic punch driver HY360

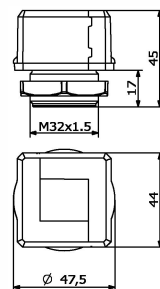


Dimensions [mm]

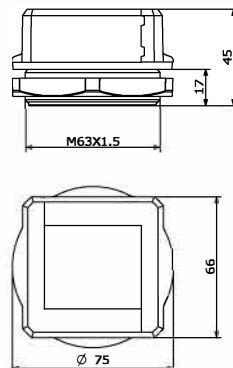
DESPRED 25



DESPRED 32



DESPRED 63





DES inserts - small: single, double and quadruple

- ▶ Inserts for cables from 2 to 16 mm diameter
- ▶ "Blind" version available
- ▶ Grey and black colours available
- ▶ UL94-V0 for both colours



Model	Code	Ø Cable [mm]	Model	Code	Pcs /pack
		☐			
SPP 0GA	1731320100	senza foro	SPP 0BA	1731320200	10
SPP 2GA	1731320102	2-3	SPP 2BA	1731320202	
SPP 3GA	1731320103	3-4	SPP 3BA	1731320203	
SPP 4GA	1731320104	4-5	SPP 4BA	1731320204	
SPP 5GA	1731320105	5-6	SPP 5BA	1731320205	
SPP 6GA	1731320106	6-7	SPP 6BA	1731320206	
SPP 7GA	1731320107	7-8	SPP 7BA	1731320207	
SPP 8GA	1731320108	8-9	SPP 8BA	1731320208	
SPP 9GA	1731320109	9-10	SPP 9BA	1731320209	
SPP 10GA	1731320110	10-11	SPP 10BA	1731320210	
SPP 11GA	1731320111	11-12	SPP 11BA	1731320211	
SPP 12GA	1731320112	12-13	SPP 12BA	1731320212	
SPP 13GA	1731320113	13-14	SPP 13BA	1731320213	
SPP 14GA	1731320114	14-15	SPP 14BA	1731320214	
SPP 15GA	1731320115	15-16	SPP 15BA	1731320215	
SPP 16GA	1731320116	16-17	SPP 16BA	1731320216	
		☐☐			
SPP 2x2GA	1731320304	2 x 2	SPP 2x2BA	1731320404	10
SPP 2X3GA	1731320306	2 x 3	SPP 2X3BA	1731320406	
SPP 2X4GA	1731320308	2 x 4	SPP 2X4BA	1731320408	
SPP 2X5GA	1731320310	2 x 5	SPP 2X5BA	1731320410	
SPP 2X6GA	1731320312	2 x 6	SPP 2X6BA	1731320412	
SPP 2X7GA	1731320314	2 x 7	SPP 2X7BA	1731320414	
SPP 2X8GA	1731320316	2 x 8	SPP 2X8BA	1731320416	
		☐☐☐			
SPP 4X2GA	1731320318	4 x 2	SPP 4X2BA	1731320418	10
SPP 4X3GA	1731320320	4 x 3	SPP 4X3BA	1731320420	
SPP 4X4GA	1731320322	4 x 4	SPP 4X4BA	1731320422	
SPP 4X5GA	1731320324	4 x 5	SPP 4X5BA	1731320424	
SPP 4X6GA	1731320326	4 x 6	SPP 4X6BA	1731320426	

The SPP inserts enable several cables from 2 to 16 mm diameter to be installed in the DES splittable frame.

The 2X and 4X versions allow multiple cables in the same grommet.

SPP ATEX series can be used in zone 2 and 22 according to IEC 60079-10.

Technical data

Material: TPE

Flammability: self-extinguishing acc. to UL94-V0 (grey or black)

Temperature: -40°C... +110°C (static)

Features: halogens and silicones free

Related products

DES 24 DES L5 DESPREL
DES 16 DES L4
DES 10 DES L3
DES Q DES L2



DES inserts with extended range - for cables without connectors

- ▶ Diameters from 2,5 to 14 mm
- ▶ "Blind" insert pierceable available
- ▶ Grey and black colours available
- ▶ UL94-V0 for both colours



Model	Code	Ø Cable min/max [mm]	Model	Code	Pcs /pack
SPP K0GA	1731321100	"blind"	SPP K0BA	1731323100	
SPP K1GA	1731321110	2,5/7	SPP K1BA	1731323110	
SPP K2GA	1731321115	4,5/10	SPP K2BA	1731323115	10
SPP K3GA	1731321120	7,5/12,5	SPP K3BA	1731323120	
SPP K4GA	1731321125	9/14	SPP K4BA	1731323125	

The SPP K inserts have a dual function: they can be used as "blind" inserts for future application of single cable without connector or they can be used as single grommet for one cable without connector. The cable size can be chosen between 4 solutions from 2,5 a 14 mm diameter.

The double membrane ensures the highest water and dust protection.

SPP K ATEX series can be used in zone 2 and 22 according to IEC 60079-10.

Technical data

Material: TPE

Flammability: self-extinguishing acc. to UL94-V0 (grey or black)

Temperature: -40°C... +110°C (static)

Features: halogens and silicones free

Related products

DES 24	DES L5	DESPRED
DES 16	DES L4	
DES 10	DES L3	
DES Q	DES L2	



DES insert - large

- ▶ SPG: inserts for cables with and without connectors or for corrugated pipes from 17 to 35 mm diameter
- ▶ SPG K0: blind (pierceable) version
- ▶ 2 blind versions available
- ▶ UL94-V0 for both grey and black



Model	Code	Ø Cable [mm]	Model	Code	Pcs /pack
SPG 0GA	1731322000	"blind"	SPG 0BA	1731322020	
SPG K0GA	1731322300	"blind"/ pierceable Ø max. 32	SPG K0BA	1731322400	
SPG 17GA	1731322117	17-18	SPG 17BA	1731322217	10
SPG 18GA	1731322118	18-19	SPG 18BA	1731322218	
SPG 19GA	1731322119	19-20	SPG 19BA	1731322219	
SPG 20GA	1731322120	20-21	SPG 20BA	1731322220	
SPG 21GA	1731322121	21-22	SPG 21BA	1731322221	
SPG 22GA	1731322122	22-23	SPG 22BA	1731322222	
SPG 23GA	1731322123	23-24	SPG 23BA	1731322223	
SPG 24GA	1731322124	24-25	SPG 24BA	1731322224	
SPG 25GA	1731322125	25-26	SPG 25BA	1731322225	
SPG 26GA	1731322126	26-27	SPG 26BA	1731322226	
SPG 27GA	1731322127	27-28	SPG 27BA	1731322227	
SPG 28GA	1731322128	28-29	SPG 28BA	1731322228	
SPG 29GA	1731322129	29-30	SPG 29BA	1731322229	
SPG 30GA	1731322130	30-31	SPG 30BA	1731322230	
SPG 31GA	1731322131	31-32	SPG 31BA	1731322231	
SPG 32GA	1731322132	32-33	SPG32BA	1731322232	
SPG 33GA	1731322133	33-34	SPG33BA	1731322233	
SPG 34GA	1731322134	34-35	SPG34BA	1731322234	

The SPG inserts are designed for cables with or without connectors or for corrugated pipes with diameter from 17 to 35mm.

Both grey and black colors guarantee the UL94V0 self-extinguishing.

SPG ATEX series can be used in zone 2 and 22 according to IEC 60079-10.

Technical data

Material: TPE

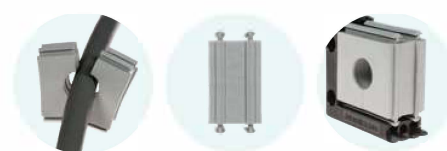
Flammability: self-extinguishing acc. to UL94-V0 (grey or black)

Temperature: -40°C... +110°C (static)

Features: halogens and silicones free

Related products

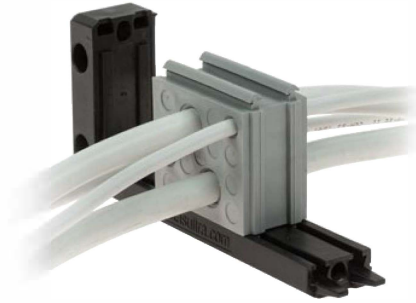
DES 24 DES L5 DESPREL
DES 16 DES L4
DES 10 DES L3
DES Q DES L2



DES insert - large - for cables without connectors - double membrane

- ▶ For high number of cables without connectors
- ▶ Grey and black colours available
- ▶ UL94-V0 for both colours
- ▶ Strain relief according to EN 62444

Double parallel membrane



Model	Code	Colore	Cable nr. - Ø cable [mm]	Pcs /pack
SPG M7GA	1731322307	■	4 - max. 13,5 2 - max. 5	10
SPG M7BA	1731322407	■	1 - max. 9,5	
SPG M9GA	1731322309	■	9 - max. 8,8	
SPG M9BA	1731322409	■		
SPG M14GA	1731322314	■	12 - max. 6,5 2 - max. 12	
SPG M14BA	1731322414	■		
SPG M15A	1731322315	■	15 - max. 7	
SPG M15BA	1731322415	■		

The SPG M inserts enable a high number of cables to be installed in the DES splittable frames.

The cable is pushed through the front membrane, whilst the second membrane increases the strain relief and liquid resistance.

SPG M ATEX series can be used in zone 2 and 22 according to IEC 60079-10.

Technical data

Material: TPE

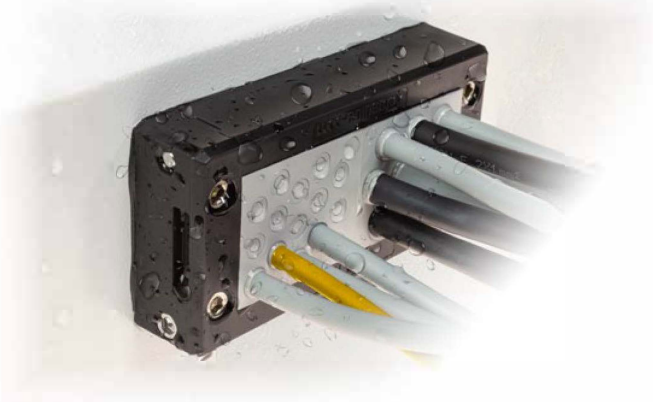
Flammability: self-extinguishing acc. to UL94-V0 (grey or black)

Temperature: -40°C... +110°C (static)

Features: halogens and silicones free

Related products

- DES 24 DES L5 DESPREL
- DES 16 DES L4
- DES 10 DES L3
- DES Q DES L2



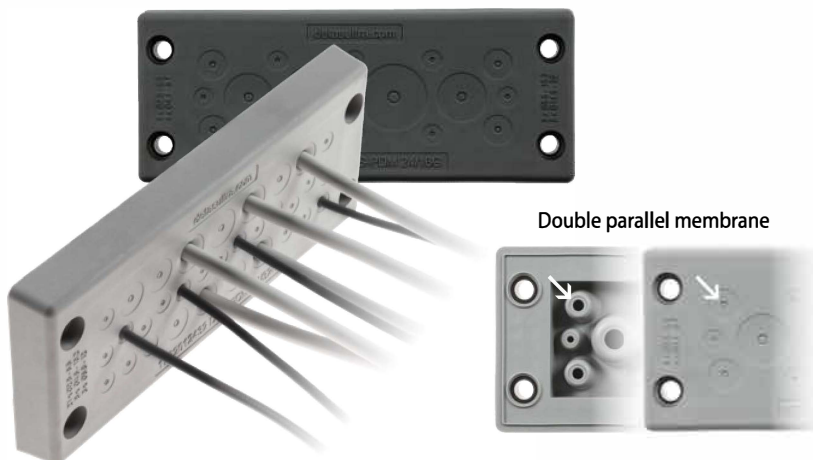


DES PDM 24 ATEX



Cable entry plates with internal frame and double membrane

- ▶ For large number of cables without connectors
- ▶ High strain relief thanks to the double membrane
- ▶ Cost efficient solution
- ▶ IP66 and Nema 4X certified
- ▶ Threaded inserts or plastic rivets version on request



Col.	Model	Code	Cable nr. - Ø cable min/max [mm]	Dimensions [mm]		Pcs /pack
				Cut-out	Plate	
■	DES PDM 24A/14G	1732312414	10 - 2,8 / 6,5	112 x 36	148,6 x 59,6	10
■	DES PDM 24A/14B	1732313414	4 - 14,5 / 22			
■	DES PDM 24A/15G	1732312415	15 - 6,8 / 12			
■	DES PDM 24A/15B	1732313415				
■	DES PDM 24A/16G	1732312416	8 - 2,8 / 6,5 4 - 4,4 / 9,7			
■	DES PDM 24A/16B	1732313416	2 - 8,6 / 16,2 2 - 14,5 / 22			
■	DES PDM 24A/17G	1732312417	6 - 2,8 / 6,5 6 - 4,6 / 10,2			
■	DES PDM 24A/17B	1732313417	5 - 8,6 / 16,2			
■	DES PDM 24A/25G	1732312425	12 - 2,8 / 6,5 7 - 4,4 / 9,7			
■	DES PDM 24A/25B	1732313425	6 - 6,8 / 12			
■	DES PDM 24A/32G	1732312432	21 - 2,8 / 6,5 8 - 4,6 / 10,2			
■	DES PDM 24A/32B	1732313432	3 - 6,8 / 12			
■	DES PDM 24A/42G	1732312442	42 - 2,8 / 6,5			
■	DES PDM 24A/42B	1732313442				

The DES PDM 24 is an innovative alternative to standard cable glands on electrical, electronic and telecommunication cabinets and equipment.

The cable is pushed through the front membrane, whilst the second membrane increases the strain relief and liquid resistance.

DES PDM 24 ATEX series can be used in zone 2 and 22 according to IEC 60079-10.

Technical data

Material: TPE

Flammability: self-extinguishing acc. to UL94-V0

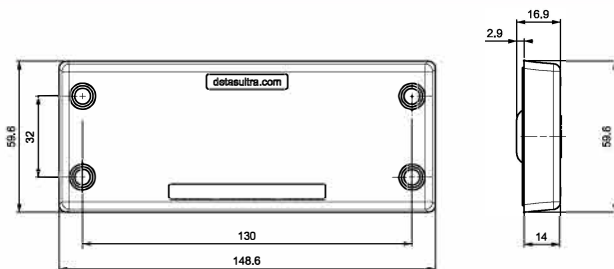
Temperature: -40°C... +105°C (static)

Features: halogens and silicones free

Related products

Hydraulic punch driver HY360

Dimensions [mm]

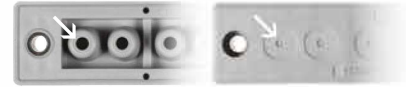


Cable entry plates with internal frame and double membrane

- ▶ For several number of cables in a limited space
- ▶ High strain relief thanks to the double membrane
- ▶ Cost efficient solution
- ▶ High IP grade (IP65)
- ▶ Threaded inserts or plastic rivets version on request



Double parallel membrane



Model	Code	Cable nr. - Ø cable min/max [mm]	Dimensions [mm]		Pcs /pack
			Cut-out	Plate	
DES PDM S 112A/7G	1732321127	7 - 6,8 / 12	112x18	150x32	10
DES PDM S 112A/22G	1732321122	22 - 3,2 / 6,5			
DES PDM S 112A/7B	1732322127	7 - 6,8 / 12			
DES PDM S 112A/22B	1732322122	22 - 3,2 / 6,5			

The DES PDM S is an innovative alternative to standard cable glands on electrical, electronic and telecommunication cabinets and equipment.

The cable is pushed through the front membrane, whilst the second membrane increases the strain relief and liquid resistance.

DES PDM S ATEX series can be used in zone 2 and 22 according to IEC 60079-10.

Technical data

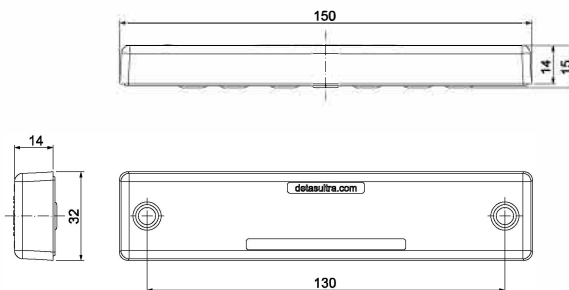
Material: TPE

Flammability: self-extinguishing acc. to UL94-V0

Temperature: -40°C... +105°C (static)

Features: halogens and silicones free

Dimensions [mm]



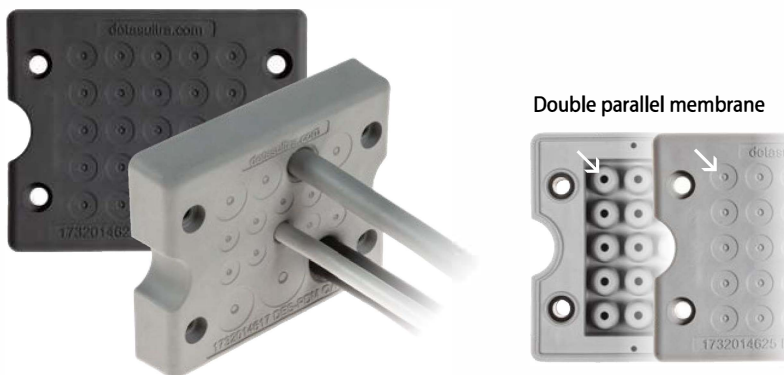


DES PDM Q ATEX



Cable entry plates with internal frame and double membrane

- ▶ For large number of cables without connectors
- ▶ High strain relief thanks to the double membrane
- ▶ Cost efficient solution
- ▶ IP66 and Nema 4X certified
- ▶ Threaded inserts or plastic rivets version on request



Model	Code	Cable nr. - Ø cable min/max [mm]	Dimensions [mm]		Pcs /pack
			Cut-out	Plate	
DES PDM Q 13GA	1732314613	8 - 2,8 / 6,5 4 - 4,6 / 10,2 1 - 14,5 / 22	46 x 46	74x60	10
DES PDM Q 17GA	1732314617	10 - 2,8 / 6,5 4 - 4,6 / 10,2 2 - 6,8 / 12 1 - 8,6 / 16,2			
DES PDM Q 25GA	1732314625	25 - 2,8 / 6,5			
DES PDM Q 13BA	1732315614	8 - 2,8 / 6,5 4 - 4,6 / 10,2 1 - 14,5 / 22			
DES PDM Q 17BA	1732315618	10 - 2,8 / 6,5 4 - 4,6 / 10,2 2 - 6,8 / 12 1 - 8,6 / 16,2			
DES PDM Q 25BA	1732315626	25 - 2,8 / 6,5			

The DES PDM Q is an innovative alternative to standard cable glands on electrical, electronic and telecommunication cabinets and equipment.

The cable is pushed through the front membrane, whilst the second membrane increases the strain relief and liquid resistance.

DES PDM Q ATEX series can be used in zone 2 and 22 according to IEC 60079-10.

Technical data

Material: TPE

Flammability: self-extinguishing acc. to UL94-V0

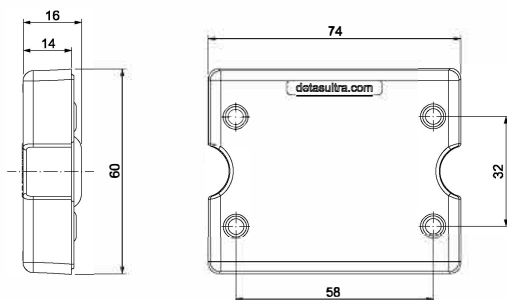
Temperature: -40°C... +105°C (static)

Features: halogens and silicones free

Related products

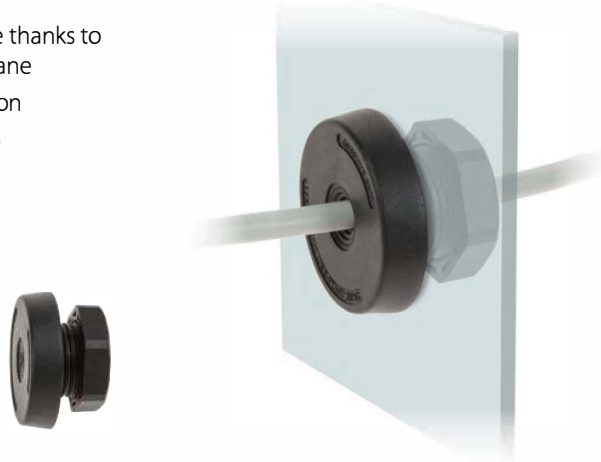
Hydraulic punch driver HY360

Dimensions [mm]



Round cable entry plates for single cable - internal frame and double membrane

- ▶ Metric sized
- ▶ High retaining force thanks to the double membrane
- ▶ Cost efficient solution
- ▶ High IP grade (IP66)
- ▶ Reduced thickness



Double parallel membrane



Model	Code	Cable nr. - Ø cable [mm]	Dimensions [mm]			Pcs /pack
			Thread	Ø Cut-out	Ø Plate	
DES PDMU 20GA	1732330120	1 - max. 10,5	M20	20,5	36	10
DES PDMU 25GA	1732330125	1 - max. 16	M25	25,5	40	
DES PDMU 32GA	1732330132	1 - max. 22	M32	32,5	46	
DES PDMU 20BA	1732331120	1 - max. 10,5	M20	20,5	36	
DES PDMU 25BA	1732331125	1 - max. 16	M25	25,5	40	
DES PDMU 32BA	1732331132	1 - max. 22	M32	32,5	46	

The cable entry plates series DES PDMU are used to save space and time as alternative to cable glands. They use the metric holes on cabinets or machinery and the nutlock guarantees a strong strain relief and highest water and dust protection.

The cable is pushed through the front membrane, whilst the second membrane increases the strain relief and liquid resistance.

DES PDMU ATEX series can be used in zone 2 and 22 according to IEC 60079-10.

Technical data

Material: TPE

Flammability: self-extinguishing acc. to UL94-V0

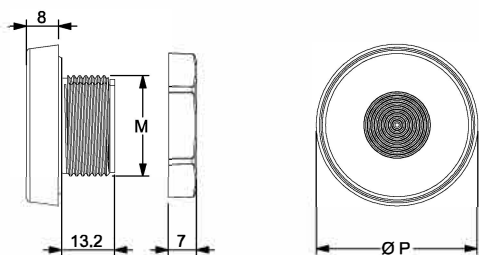
Temperature: -40°C... +105°C (static)

Features: halogens and silicones free

Related products

Hydraulic punch driver HY360

Dimensions [mm]



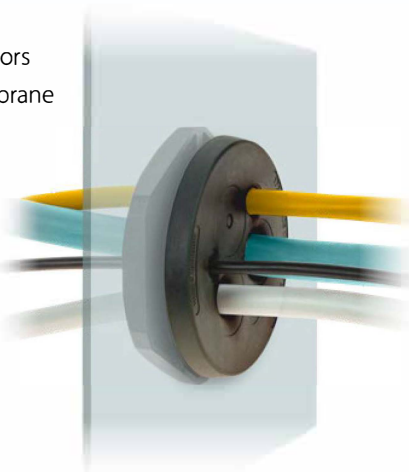


DES PDM M ATEX



Round cable entry plates with internal frame and double membrane

- ▶ Metric sized
- ▶ For large number of cables without connectors
- ▶ High strain relief thanks to the double membrane
- ▶ Cost efficient solution
- ▶ High IP grade (IP66-68)
- ▶ Locknut included



Double parallel membrane



Col.	Model	Code	Cable nr. - Ø cable min/max [mm]	Thread x1.5	Dimensions Ø P [mm]	Pcs /pack
●	DES PDM M32A/4G	1732333204	3 - 2,6 / 6,5	M32	46	10
●	DES PDM M32A/4B	1732334205	1 - 5,5 / 12,5			
●	DES PDM M32A/4-2G	1732333242	4 - 3,5 / 8,8	M32	46	
●	DES PDM M32A/4-2B	1732334252				
●	DES PDM M32A/7G	1732333207	7 - 2,6 / 6,5	M32	46	
●	DES PDM M32A/7B	1732334208				
●	DES PDM M40A/8G	1732334008	4 - 2,6 / 6,5	M40	54	
●	DES PDM M40A/8B	1732335009	4 - 4 / 10,2			
●	DES PDM M50A/8G	1732335008	5 - 4,6 / 10,2	M50	64	
●	DES PDM M50A/8B	1732336009	3 - 6,8 / 12,5			
●	DES PDM M50A/10G	1732335010	7 - 2,8 / 6,5	M50	64	
●	DES PDM M50A/10B	1732336011	2 - 4,6 / 10,2			
●	DES PDM M50A/10B	1732336011	1 - 14,5 / 22			
●	DES PDM M50A/12G	1732335012	4 - 2,8 / 6,5	M50	64	
●	DES PDM M50A/12B	1732336013	8 - 4,6 / 10,2			
●	DES PDM M50A/19G	1732335019	19 - 2,8 / 6,5	M50	64	
●	DES PDM M50A/19B	1732336020				
●	DES PDM M63A/6G	1732336306	3 - 4,6 / 10,2	M63	77	
●	DES PDM M63A/6B	1732337307	3 - 10,9 / 20			
●	DES PDM M63A/9G	1732336309	1 - 2,6 / 6	M63	77	
●	DES PDM M63A/9B	1732337310	3 - 4,6 / 10,2			
●	DES PDM M63A/9B	1732337310	4 - 8,6 / 16,2			
●	DES PDM M63A/9B	1732337310	1 - 10,9 / 20			
●	DES PDM M63A/13G	1732336313	4 - 2,8 / 6	M63	77	
●	DES PDM M63A/9B	1732337310	4 - 4,6 / 10,2			
●	DES PDM M63A/14G	1732336314	14 - 5 / 10	M63	77	
●	DES PDM M63A/14B	1732337315				
●	DES PDM M63A/35G	1732336335	35 - 2,6 / 5,5	M63	77	
●	DES PDM M63A/35B	1732337336				

The cable entry plates series DES PDMU are used to save space and time as alternative to cable glands. They use the metric holes on cabinets or machinery and the nutlock guarantees a strong strain relief and highest water and dust protection.

The cable is pushed through the front membrane, whilst the second membrane increases the strain relief and liquid resistance.

DES PDM M ATEX series can be used in zone 2 and 22 according to IEC 60079-10.

Technical data

Material: TPE

Flammability: self-extinguishing acc. to UL94-V0

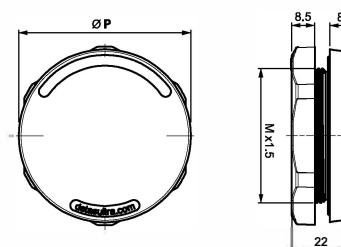
Temperature: -40°C... +105°C (static)

Features: halogens and silicones free

Related products

Hydraulic punch driver HY360

Dimensions [mm]



Cable entry plate - large frame and double membrane

- ▶ For up to 72 cables without connectors
- ▶ High strain relief thanks to the double membrane
- ▶ Cost efficient solution
- ▶ High IP grade (IP66)



Model	Code	Cable nr. - Ø cable min/max [mm]	Dimensions [mm]		Pcs /pack
			Cut-out	Plate	
DES PDM KN 72GA	1732340072	42 - 2,8 / 6,5 21 - 4,6 / 10,2 6 - 8,6 / 16,2 3 - 14,5 / 22	192 x 62	221 x 90	1
DES PDM KN 72BA	1732341073				

The DES PDM KN is an alternative solution to standard cable glands on electrical, electronic and telecommunication cabinets and equipment.

The cable is pushed through the front membrane, whilst the second membrane increases the strain relief and liquid resistance.

DES PDM KN ATEX series can be used in zone 2 and 22 according to IEC 60079-10.

Technical data

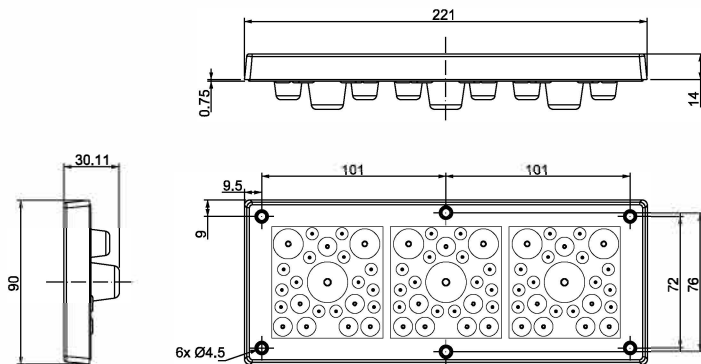
Material: TPE

Flammability: self-extinguishing acc. to UL94-V0

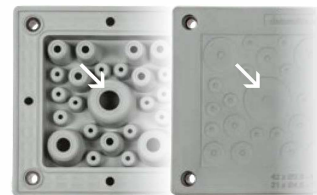
Temperature: -40°C... +105°C (static)

Features: halogens and silicones free

Dimensions [mm]



Double parallel membrane

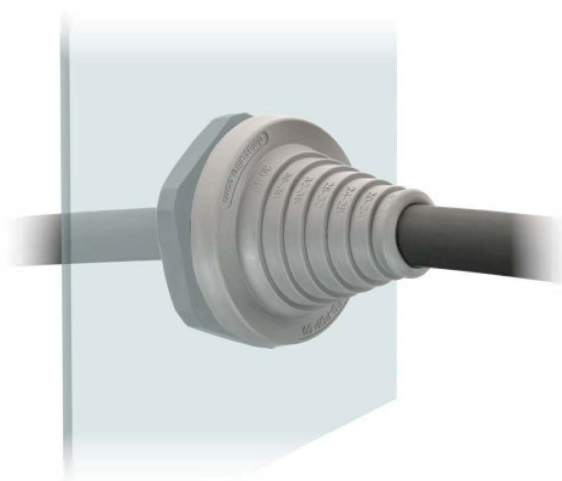




DES PDP ATEX

Round base, cone-shaped cable entry plate with locknut

- ▶ For diameters from 8 to 55 mm
- ▶ Reinforcing base plate
- ▶ Cost efficient solution
- ▶ UL94-V0 for grey and black



Model	Code	Cable nr. - Ø cable min/max [mm]	Thread x 1,5	Dimensions [mm]			Pcs /pack
				Cut-out	Ø P	H	
DES PDP 40GA	1732350040	1 - 8 / 29	M40	40,5	54	62	10
DES PDP 50GA	1732350050	1 - 17 / 42	M50	50,5	64	50	
DES PDP 63GA	1732350063	1 - 23 / 55	M63	63,5	77	62	
DES PDP 40BA	1732352040	1 - 8 / 29	M40	40,5	54	62	
DES PDP 50BA	1732352050	1 - 17 / 42	M50	50,5	64	50	
DES PDP 63BA	1732352063	1 - 23 / 55	M63	63,5	77	62	

The DES PDP is available in M40, M50 and M63 sizes, enabling non-terminated cables with diameter from 8 to 55 mm to pass through the walls of the electrical cabinets.

The reinforcing base plate increases the stability when large cables are used.

DES PDP ATEX series can be used in zone 2 and 22 according to IEC 60079-10.

Technical data

Material: TPE

Flammability: self-extinguishing acc. to UL94-V0

Temperature: -40°C... +105°C (static)

Features: halogens and silicones free

Related products

Hydraulic punch driver HY360

Dimensions [mm]

