



Our *passion* is enclosures.



commandCASE

Perfectly shaped

Technical data

commandCASE



Series commandCASE



Integrated design grip



Snap closure



Snap closure with lock



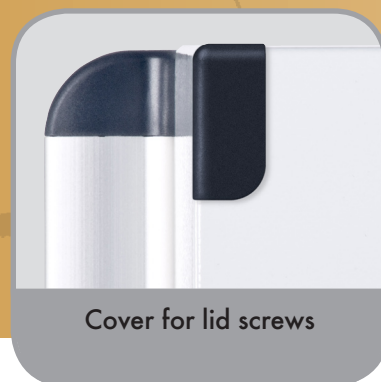
2 closures from size CC 300



Hinges and 2 lid screws
(version 1)



Lid screws
(version 2)



Cover for lid screws

Enclosure: Die-cast aluminium EN AN-44300 DIN EN 1706 (GD AL SI 12 / DIN 1725) 1° mould slope for casting ejection, internal measures diminishing circulatory towards enclosure bottom by 1°

Integrated recess: in the lid for membrane keypad or front plates

Internal mounting: Mounting standoffs in the bottom and the lid

Ingress protection: IP 66 / EN 60529

Gasket: Chloroprene gasket (-30°C bis +90°C)

Closure: Snap closures with (optional) lock and hinges at small sides (W)

Design grip „wings“: End caps polyoxymethylene (POM), RAL 7016, anthrazite grey, mounted on aluminium profile, anodised silver

Surface: Powder coating in RAL 7035, light grey

Optionally available:

Closure: lockable

Version 1: Hinges and 2 lid screws, stainless steel 1.4567 (V2A), captive. Lid screwed on rear side (side W)

Version 2: 4 lid screws, stainless steel 1.4567 (V2A), captive. Lid screwed on rear side. Integrated lid supports polypropylene (PP) in RAL 7040, window grey

Fastening: taraPLUS suspension system

Gasket: Silicone gasket (-50°C to +140°C)
EMC gasket (-55°C to +160°C)

Surface: Corrosion protection, special colours

Further options see range overview.

Range overview commandCASE Standard

Type	Mat.-Nr.	L	W	H	D	E	g	ID	SV	SZ	S	L	D	EMC
CC 200	193.200.000	230	200	120	212	144	2.466	○	□	●	□	●	●	●
CC 202	193.202.000	330	200	120	312	144	3.038	○	□	●	□	●	●	●
CC 250	193.250.000	280	250	120	262	194	3.145	○	□	●	□	●	●	●
CC 252	193.252.000	380	250	120	362	194	3.804	○	□	●	□	●	●	●
CC 300	193.300.000	330	300	120	312	244	4.134	○	□	●	□	●	●	●
CC 302	193.302.000	430	300	120	412	244	4.872	○	□	●	□	●	●	●

Range overview commandCASE version 1

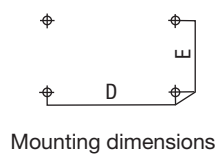
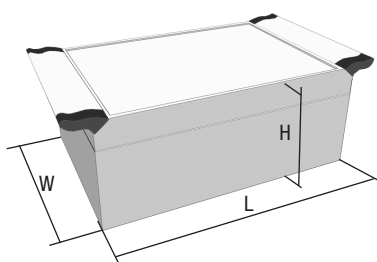
Type	Mat.-Nr.	L	W	H	D	E	g	ID	SV	S	L	D	EMC
CCS 200	194.200.000	230	200	120	212	144	2.466	□	○	□	●	●	●
CCS 202	194.202.000	330	200	120	312	144	3.038	□	○	□	●	●	●
CCS 250	194.250.000	280	250	120	262	194	3.145	□	○	□	●	●	●
CCS 252	194.252.000	380	250	120	362	194	3.804	□	○	□	●	●	●
CCS 300	194.300.000	330	300	120	312	244	4.134	□	○	□	●	●	●
CCS 302	194.302.000	430	300	120	412	244	4.872	□	○	□	●	●	●

Range overview commandCASE version 2

Type	Mat.-Nr.	L	W	H	D	E	g	ID	SV	S	L	D	EMC
CCV 200	195.200.000	230	200	120	212	144	2.466	□	○	○	●	●	●
CCV 202	195.202.000	330	200	120	312	144	3.038	□	○	○	●	●	●
CCV 250	195.250.000	280	250	120	262	194	3.145	□	○	○	●	●	●
CCV 252	195.252.000	380	250	120	362	194	3.804	□	○	○	●	●	●
CCV 300	195.300.000	330	300	120	312	244	4.134	□	○	○	●	●	●
CCV 302	195.302.000	430	300	120	412	244	4.872	□	○	○	●	●	●

□ Standard ● Available ○ Not available

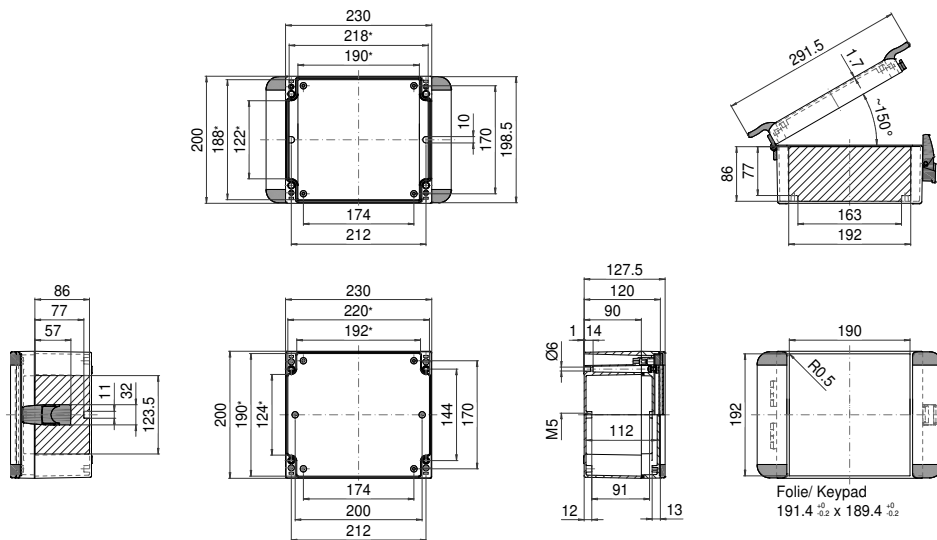
Approvals:



ROLEC Attachment and mounting dimensions

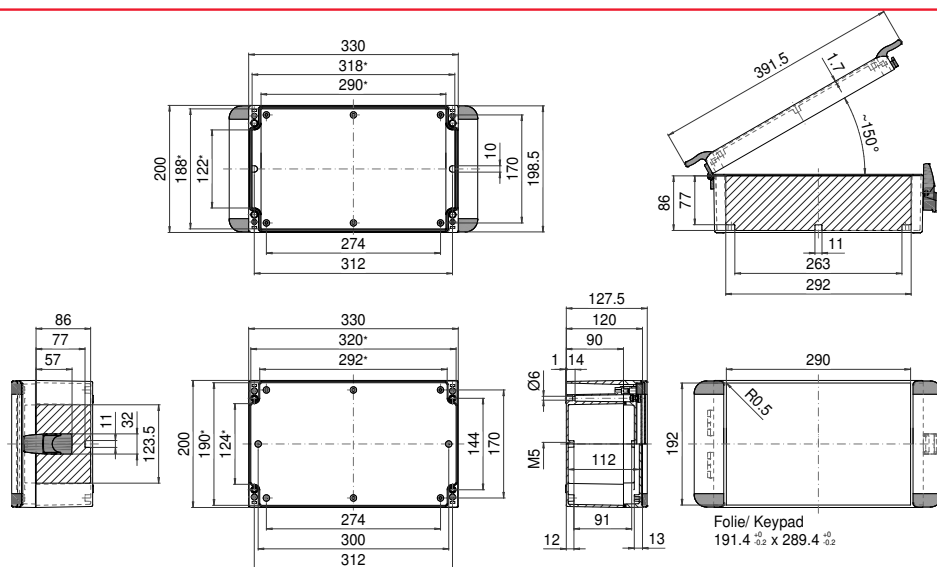
commandCASE

CC 200



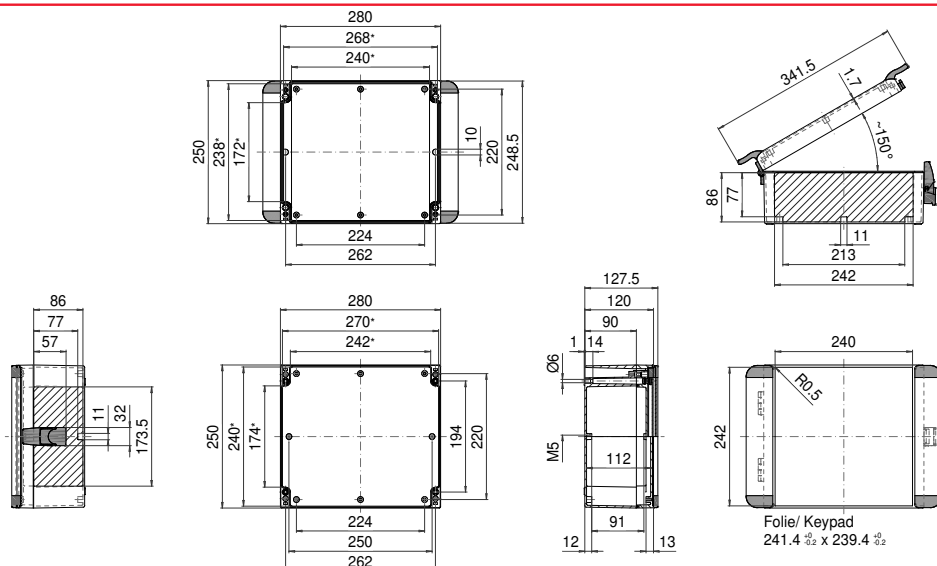
* Please note: Mould slope for casting ejection, dimensions in the amount of the bottom!

CC 202



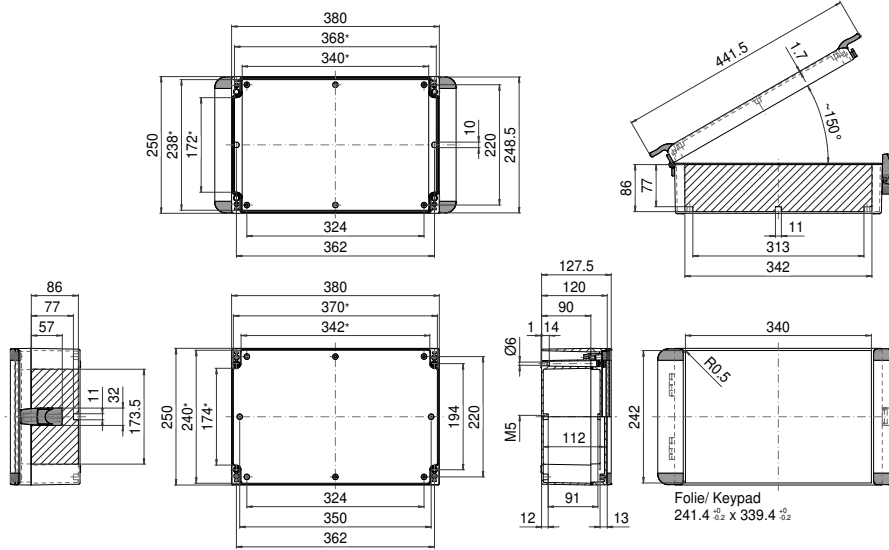
* Please note: Mould slope for casting ejection, dimensions in the amount of the bottom!

CC 250



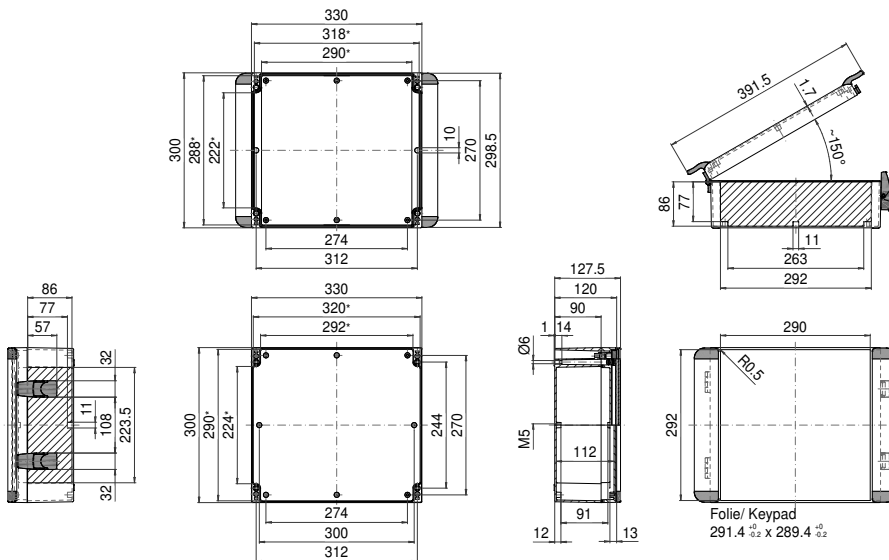
* Please note: Mould slope for casting ejection, dimensions in the amount of the bottom!

CC 252



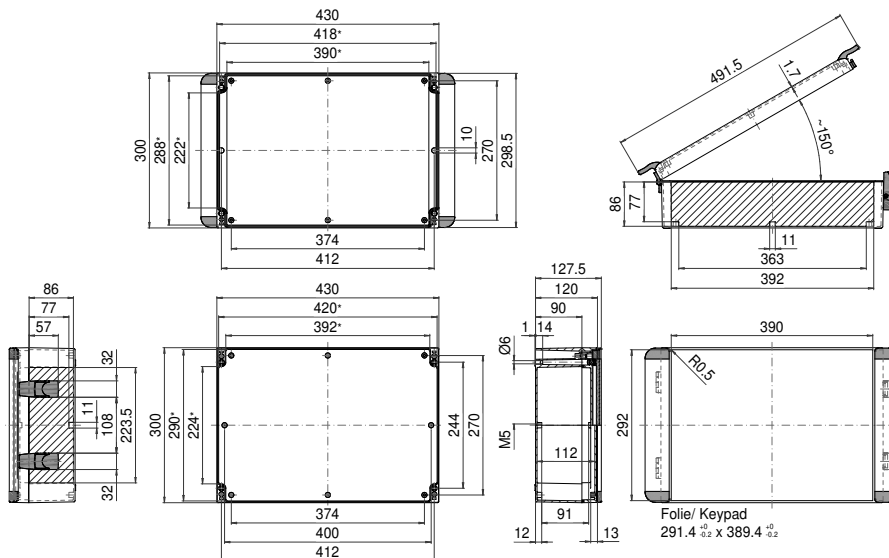
* Please note: Mould slope for casting ejection, dimensions in the amount of the bottom!

CC 300



* Please note: Mould slope for casting ejection, dimensions in the amount of the bottom!

CC 302



* Please note: Mould slope for casting ejection, dimensions in the amount of the bottom!

