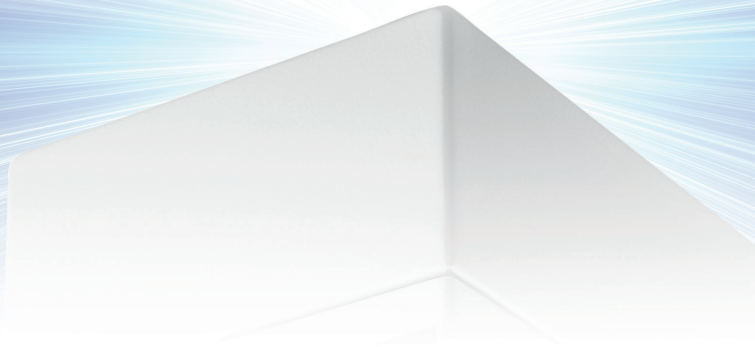
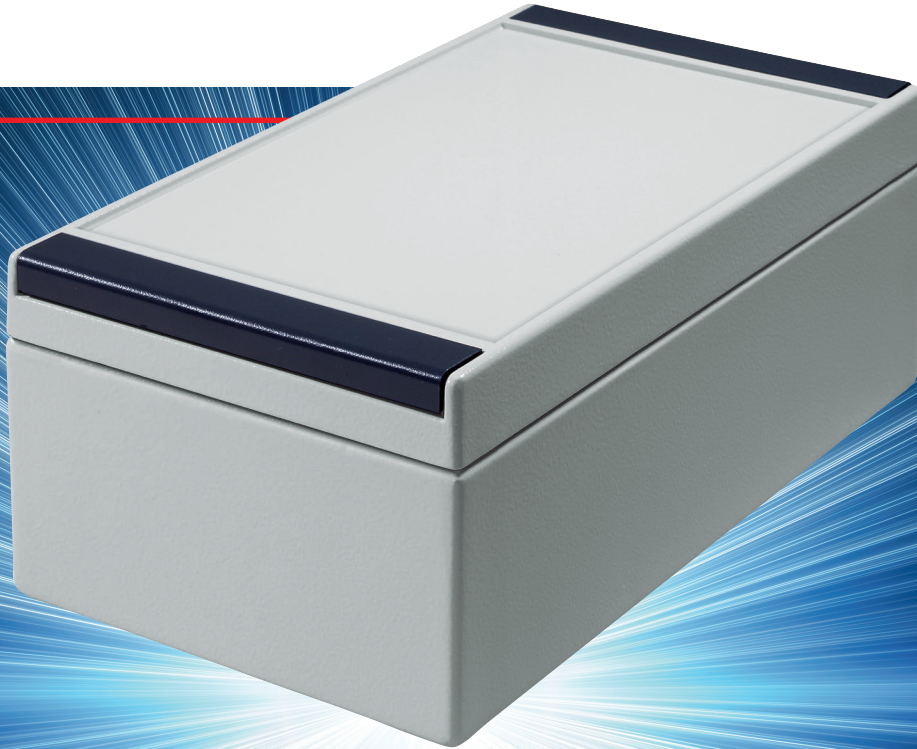




Our *passion* is enclosures.



aluPLUS

The plus side of technology and design

Technical data

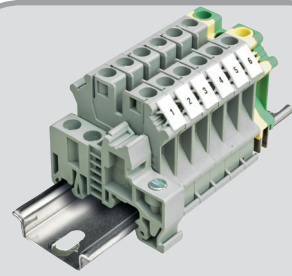
aluPLUS



Integrated recesses for membrane keypads



Enclosure fixation with closed lid



Mounting rail and terminals



Design covers for the perfect look



Economical lid support



Fastening threads in enclosure and lid for components



Standardised mounting dimensions

Enclosure: Die-cast aluminium EN AN-44300 DIN EN 1706 (GD AL SI 12 / DIN 1725). 1° mould slope for casting ejection, internal measures diminishing circulatory towards enclosure bottom by 1°.

Integrated recess: In the lid for membrane keypad or front plates.

Components: Fastening threads M5 in the bottom of enclosure and in the lid

Ingress protection: IP66 / EN 60529

Gasket: Silicone moulded gasket (-50°C to +140°C)

Lid screws: Stainless steel 1.4567 (V2A), captive

Design covers: Latching, PBT RAL 7016, anthracite grey.

Surface: Powder coating RAL 7035, light grey

Optionally available:

Lid supports: Stainless steel 1.4567 (V2A) and polyamide (PA6).

Gasket: EMC gasket (-55°C to +160°C)

Ingress protection: IP67 / EN 60529

Surface: Corrosion protection, special colours

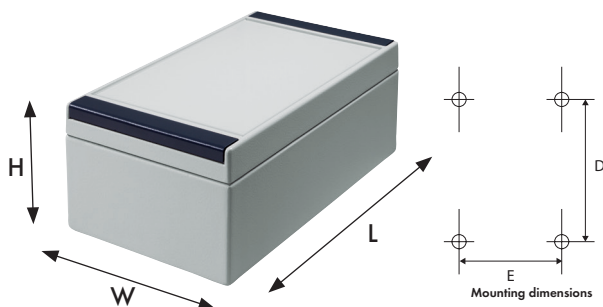
Further options, see delivery overview.

Delivery overview aluPLUS

Type	Mat.-Nr.	L	W	H	D	E	g	M	D	DH	L	T	EMC	67
AP 082	196.082.000	125	84	59	113	52	395	●	□	○	●	●	●	●
AP 083	196.083.000	175	84	59	163	52	511	●	□	○	●	●	●	●
AP 100	196.100.000	100	100	82	87	65	575	●	□	○	●	●	●	●
AP 102	196.102.000	160	100	82	147	65	767	●	□	○	●	●	●	●
AP 120	196.120.000	122	120	82	106	82	770	●	□	●	●	●	●	●
AP 122	196.122.000	220	120	82	204	82	1.110	●	□	●	●	●	●	●
AP 161	196.161.000	160	160	90	140	110	1.190	●	□	●	●	●	●	●
AP 162	196.162.000	260	160	90	240	110	1.620	●	□	●	●	●	●	●

□ Standard ● Available ○ Not available

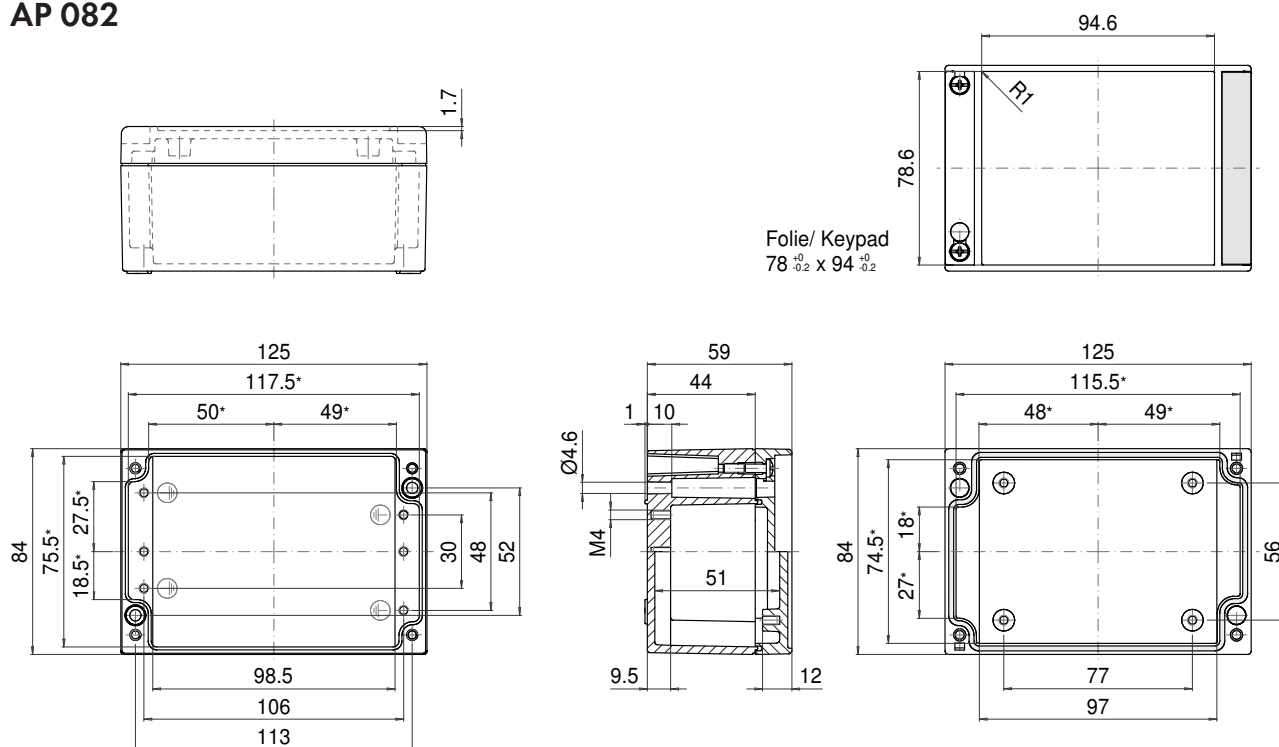
Approvals:



ROLEC Attachment and mounting dimensions

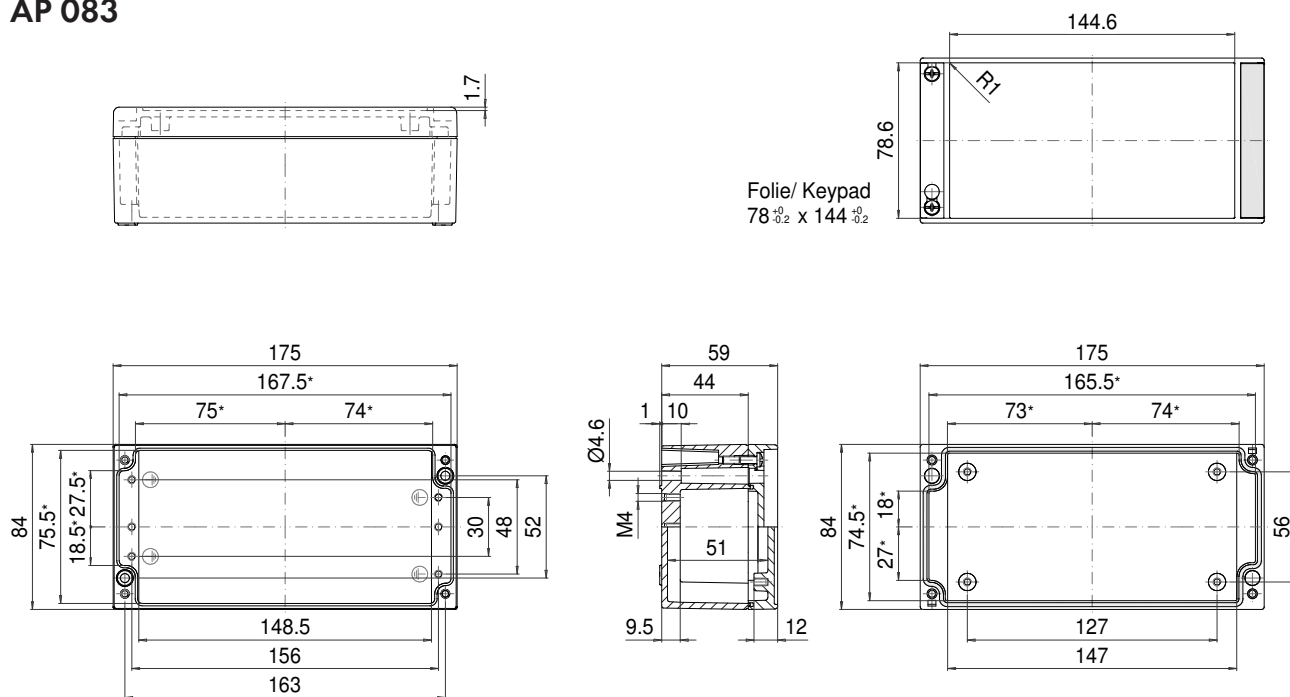
aluPLUS

AP 082



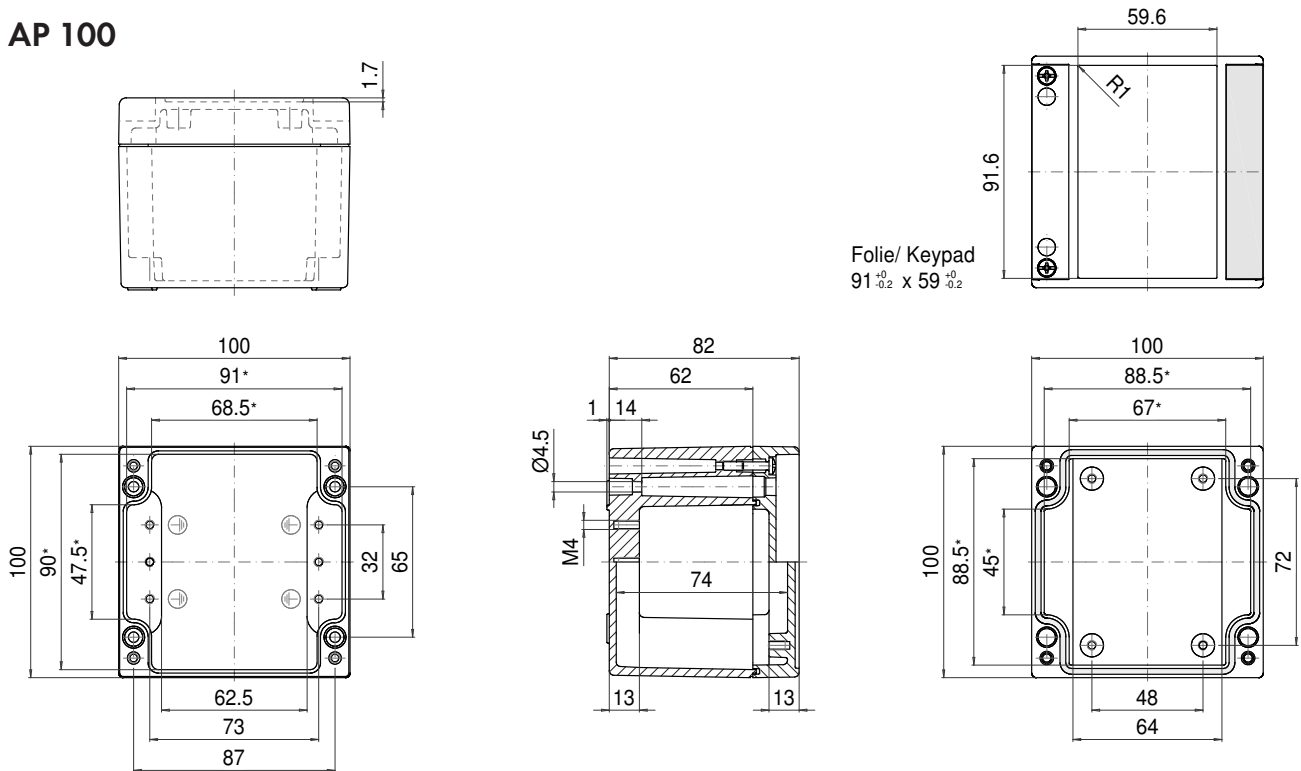
* Please note: Mould slope for casting ejection, dimensions in the amount of the bottom!

AP 083



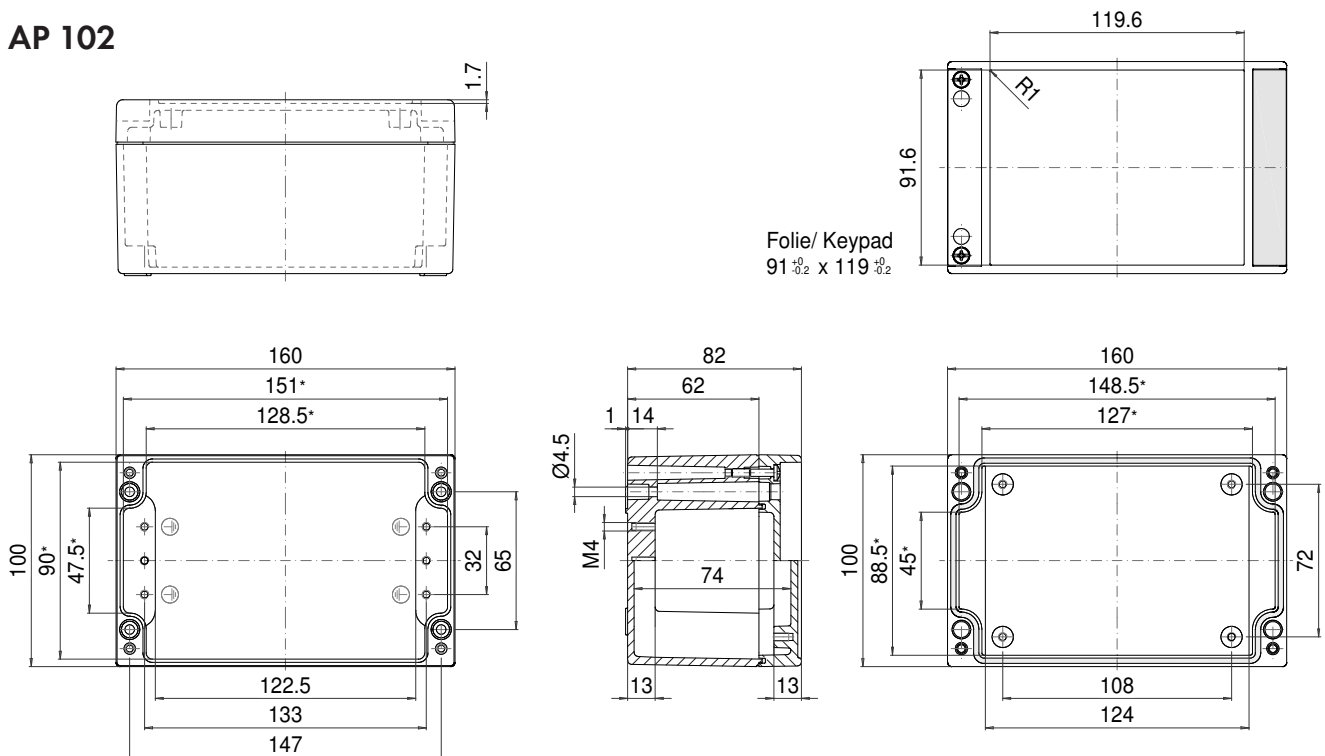
* Please note: Mould slope for casting ejection, dimensions in the amount of the bottom!

AP 100



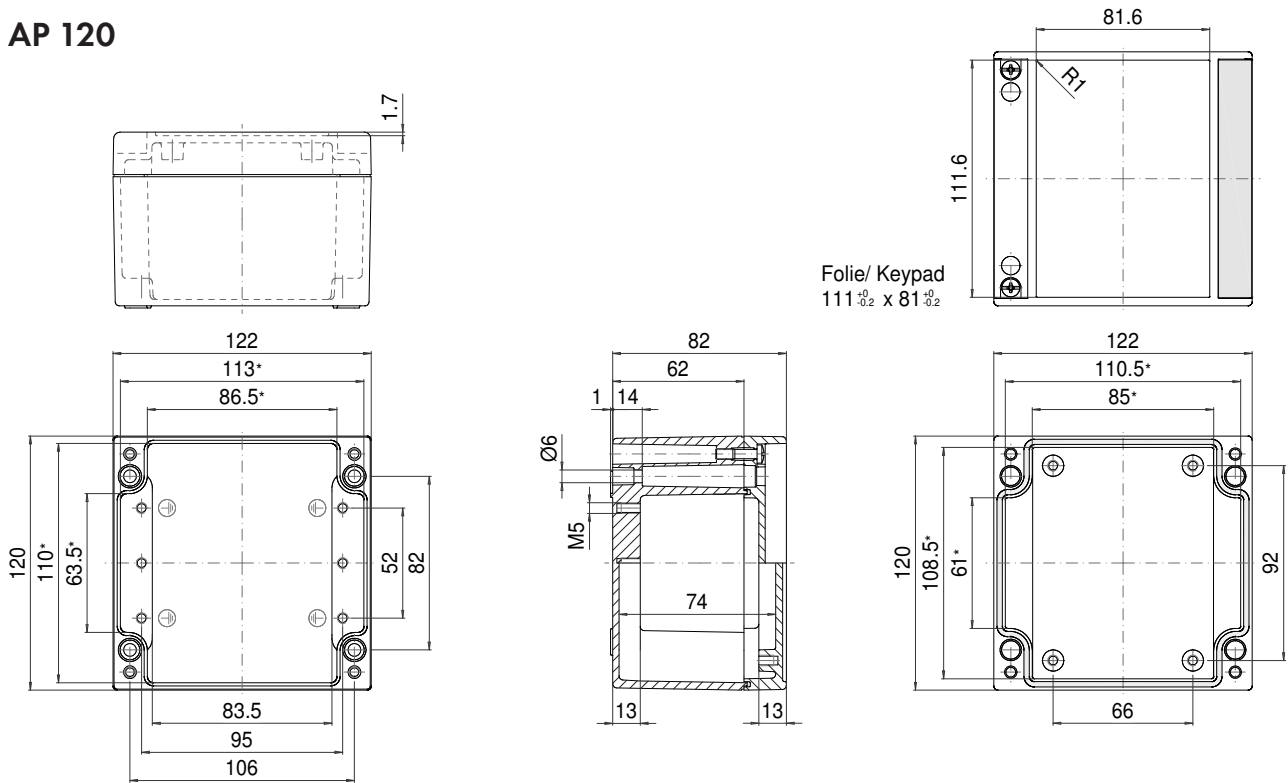
* Please note: Mould slope for casting ejection, dimensions in the amount of the bottom!

AP 102



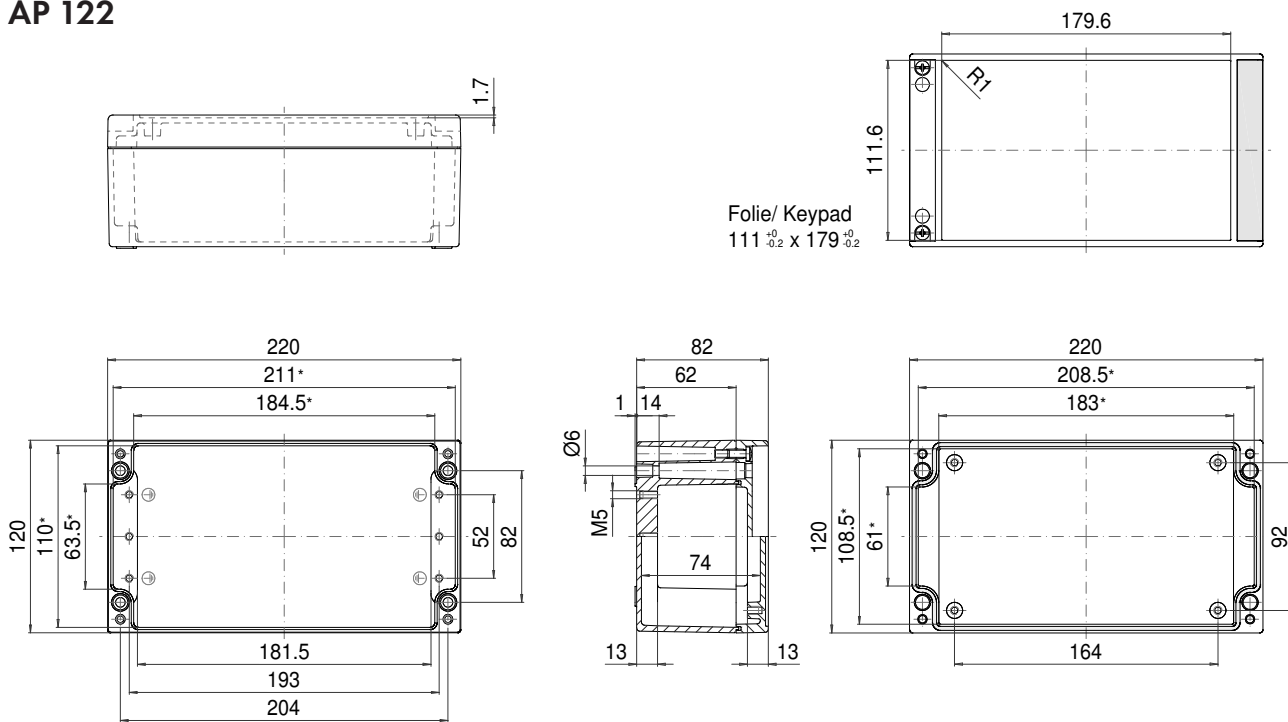
* Please note: Mould slope for casting ejection, dimensions in the amount of the bottom!

AP 120



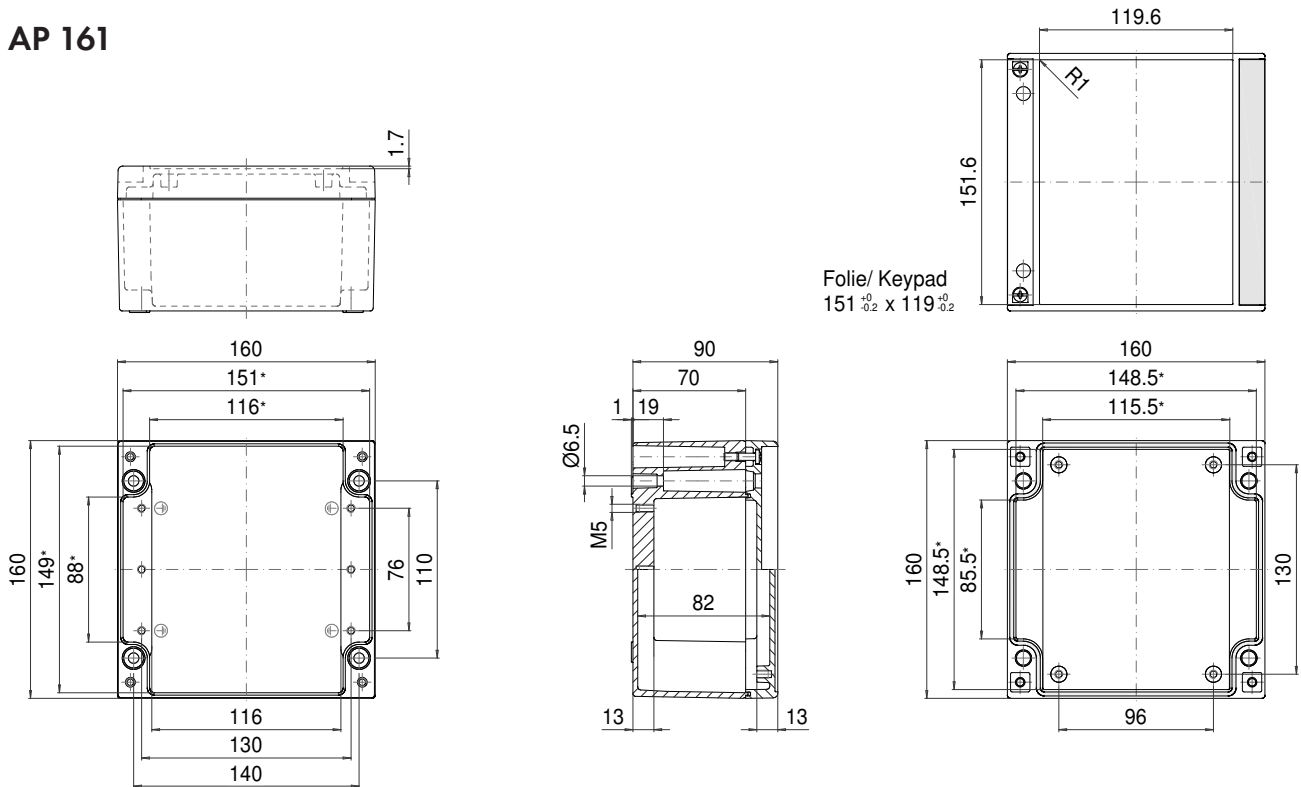
* Please note: Mould slope for casting ejection, dimensions in the amount of the bottom!

AP 122



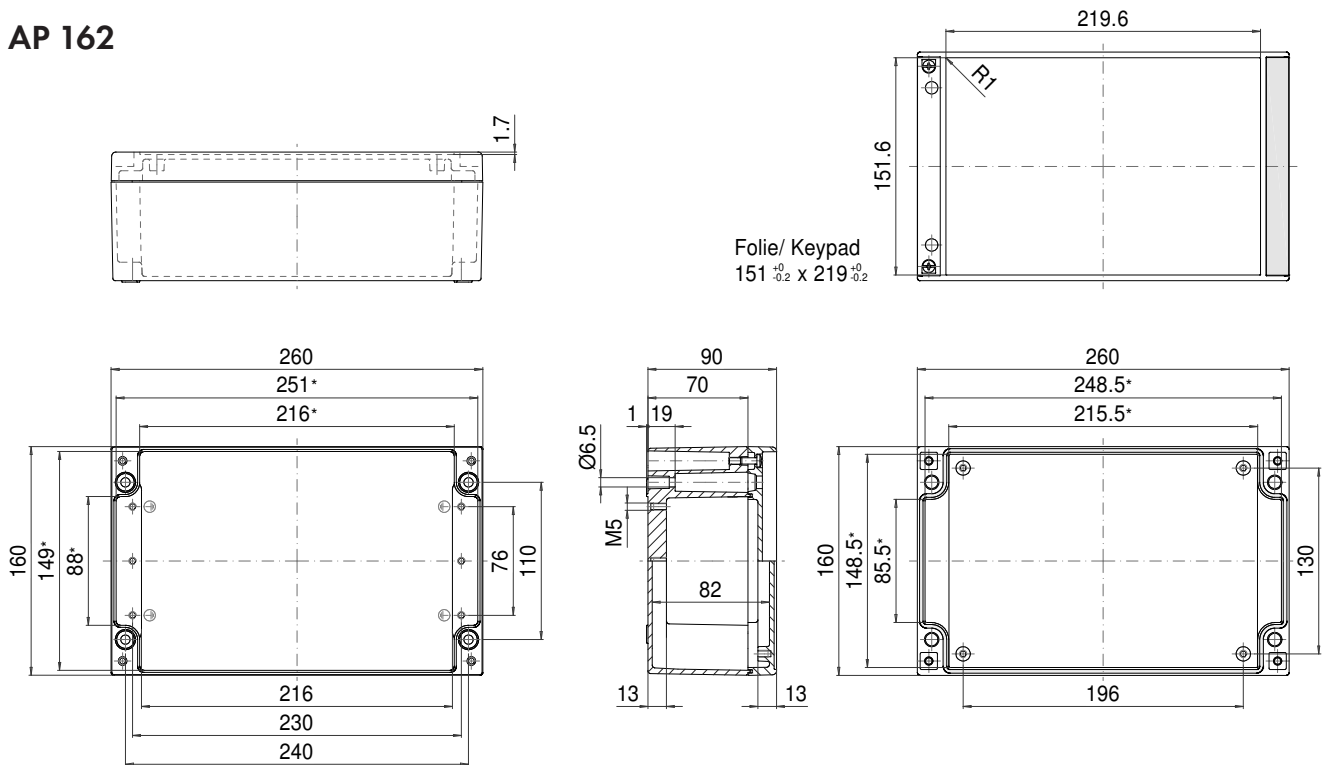
* Please note: Mould slope for casting ejection, dimensions in the amount of the bottom!

AP 161



* Please note: Mould slope for casting ejection, dimensions in the amount of the bottom!

AP 162



* Please note: Mould slope for casting ejection, dimensions in the amount of the bottom!

